

CD21 Monoclonal Antibody

catalog number: E-AB-22023

Note: Centrifuge before opening to ensure complete recovery of vial contents.

Description

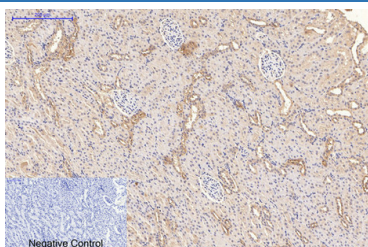
Reactivity	Human;Mouse;Rat
Immunogen	Synthetic Peptide
Host	Mouse
Isotype	IgG
Clone	5F2
Purification	Protein A purification
Conjugation	Unconjugated
Buffer	Phosphate buffered solution, pH 7.4, containing 0.05% stabilizer, 0.5% protein protectant and 50% glycerol.

Applications

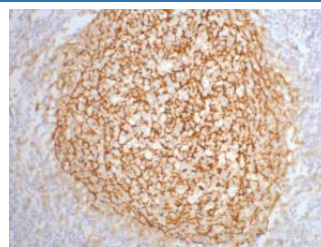
Recommended Dilution

IHC	1:100-1:300
IF	1:50-200

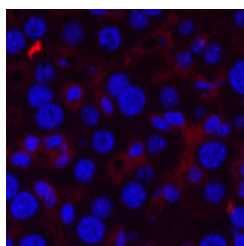
Data



Immunohistochemistry of paraffin-embedded Rat kidney tissue using CD21 Monoclonal Antibody at dilution of 1:200.



Immunohistochemistry of paraffin-embedded Human tonsil tissue using CD21 Monoclonal Antibody at dilution of 1:200.



Immunofluorescence analysis of Mouse liver tissue using CD21 Monoclonal Antibody at dilution of 1:200.

Preparation & Storage

Storage	Store at -20°C Valid for 12 months. Avoid freeze / thaw cycles.
Shipping	The product is shipped with ice pack, upon receipt, store it immediately at the temperature recommended.

Background

This gene encodes a membrane protein, which functions as a receptor for Epstein-Barr virus (EBV) binding on B and T lymphocytes. Genetic variations in this gene are associated with susceptibility to systemic lupus erythematosus type 9 (SLEB9). Alternatively spliced transcript variants encoding different isoforms have been found for this gene.

For Research Use Only