

Recombinant Human AIF1 Protein(Gst Tag)

Catalog Number: PDEH100612

Note: Centrifuge before opening to ensure complete recovery of vial contents.

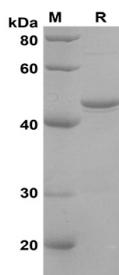
Description

| | |
|----------------------|---|
| Species | Human |
| Source | E.coli-derived Human AIF1 protein Met1-Pro147, with an N-terminal Gst |
| Calculated MW | 42.0 kDa |
| Observed MW | 45 kDa |
| Accession | P55008-1 |
| Bio-activity | Not validated for activity |

Properties

| | |
|-----------------------|--|
| Purity | > 90% as determined by reducing SDS-PAGE. |
| Endotoxin | < 10 EU/mg of the protein as determined by the LAL method |
| Storage | Generally, lyophilized proteins are stable for up to 12 months when stored at -20 to -80 °C. Reconstituted protein solution can be stored at 4-8°C for 2-7 days. Aliquots of reconstituted samples are stable at < -20°C for 3 months. |
| Shipping | This product is provided as lyophilized powder which is shipped with ice packs. |
| Formulation | Lyophilized from a 0.2 µm filtered solution in PBS with 5% Trehalose and 5% Mannitol. |
| Reconstitution | It is recommended that sterile water be added to the vial to prepare a stock solution of 0.5 mg/mL. Concentration is measured by UV-Vis. |

Data



SDS-PAGE analysis of Human AIF1 proteins, 2µg/lane of Recombinant Human AIF1 proteins was resolved with SDS-PAGE under reducing conditions, showing bands at 45 KD

Background

AIF1, also known as IBA1, is an actin-binding protein. AIF1 is expressed selectively in human macrophage-like cell lines, and in a subset of CD68(+) macrophages in the interstitial and perivascular spaces of human heart allografts. It is expressed in macrophages and neutrophils. AIF1 enhances membrane ruffling and RAC activation. AIF1 enhances the actin-bundling activity of LCP1. It also enhances lymphocyte migration. AIF1 may play a role in macrophage activation and function. It binds calcium and plays a role in RAC signaling and in phagocytosis. It promotes the proliferation of vascular smooth muscle cells and of T-lymphocytes.

For Research Use Only

Toll-free: 1-888-852-8623
Web: www.elabscience.com

Tel: 1-832-243-6086
Email: techsupport@elabscience.com

Fax: 1-832-243-6017