

CK-16 Monoclonal Antibody

catalog number: E-AB-22019

Note: Centrifuge before opening to ensure complete recovery of vial contents.

Description

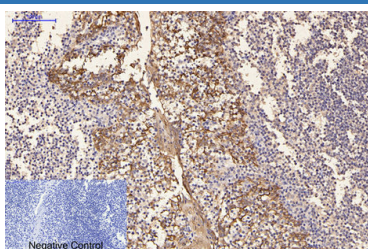
Reactivity	Human;Mouse;Rat
Immunogen	Synthetic Peptide
Host	Mouse
Isotype	IgG
Clone	3H4
Purification	Protein A purification
Conjugation	Unconjugated
Buffer	Phosphate buffered solution, pH 7.4, containing 0.05% stabilizer, 0.5% protein protectant and 50% glycerol.

Applications

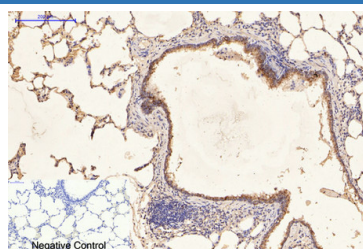
Recommended Dilution

IHC	1:100-1:300
IF	1:50-200

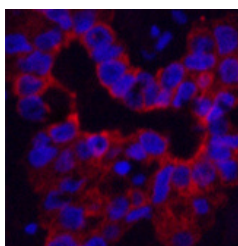
Data



Immunohistochemistry of paraffin-embedded Human tonsil tissue using CK-16 Monoclonal Antibody at dilution of 1:200.



Immunohistochemistry of paraffin-embedded Rat lung tissue using CK-16 Monoclonal Antibody at dilution of 1:200.



Immunofluorescence analysis of Human liver cancer tissue using CK-16 Monoclonal Antibody at dilution of 1:200.

Preparation & Storage

Storage	Store at -20°C Valid for 12 months. Avoid freeze / thaw cycles.
Shipping	The product is shipped with ice pack, upon receipt, store it immediately at the temperature recommended.

Background

Expressed in the hair follicle, nail bed and in mucosal stratified squamous epithelia and, suprabasally, in oral epithelium and palmoplantar epidermis. Also found in luminal cells of sweat and mammary gland ducts.

For Research Use Only