

## SLC9A7 Polyclonal Antibody

**catalog number: E-AB-16067**

**Note:** Centrifuge before opening to ensure complete recovery of vial contents.

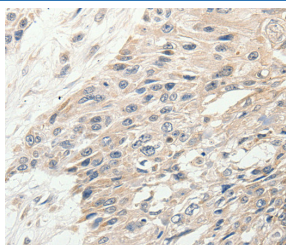
### Description

<b>Reactivity</b>	Human;Mouse
<b>Immunogen</b>	Synthetic peptide of human SLC9A7
<b>Host</b>	Rabbit
<b>Isotype</b>	IgG
<b>Purification</b>	Affinity purification
<b>Buffer</b>	Phosphate buffered solution, pH 7.4, containing 0.05% stabilizer and 50% glycerol.

### Applications Recommended Dilution

<b>IHC</b>	1:50-1:200
------------	------------

### Data



Immunohistochemistry of paraffin-embedded Human esophagus cancer tissue using SLC9A7 Polyclonal Antibody at dilution 1:50

### Preparation & Storage

<b>Storage</b>	Store at -20°C Valid for 12 months. Avoid freeze / thaw cycles.
<b>Shipping</b>	The product is shipped with ice pack, upon receipt, store it immediately at the temperature recommended.

### Background

This gene encodes a sodium and potassium/ proton antiporter that is a member of the solute carrier family 9 protein family. The encoded protein is primarily localized to the trans-Golgi network and is involved in maintaining pH homeostasis in organelles along the secretory and endocytic pathways. This protein may enhance cell growth of certain breast tumors. This gene is part of a gene cluster on chromosome Xp11.23. A pseudogene of this gene is found on chromosome 12. Alternate splicing results in multiple transcript variants.

### For Research Use Only