

## MAP1LC3C Polyclonal Antibody

**catalog number: E-AB-13378**

**Note:** Centrifuge before opening to ensure complete recovery of vial contents.

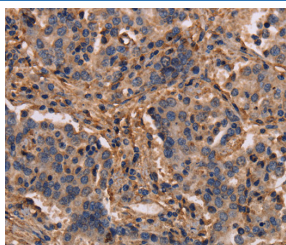
### Description

<b>Reactivity</b>	Human
<b>Immunogen</b>	Synthetic peptide of human MAP1LC3C
<b>Host</b>	Rabbit
<b>Isotype</b>	IgG
<b>Purification</b>	Affinity purification
<b>Buffer</b>	Phosphate buffered solution, pH 7.4, containing 0.05% stabilizer and 50% glycerol.

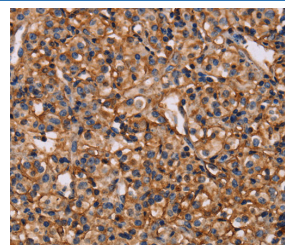
### Applications

Applications	Recommended Dilution
IHC	1:50-1:200

### Data



Immunohistochemistry of paraffin-embedded Human liver cancer tissue using MAP1LC3C Polyclonal Antibody at dilution 1:40



Immunohistochemistry of paraffin-embedded Human prostate cancer tissue using MAP1LC3C Polyclonal Antibody at dilution 1:40

### Preparation & Storage

<b>Storage</b>	Store at -20°C Valid for 12 months. Avoid freeze / thaw cycles.
<b>Shipping</b>	The product is shipped with ice pack, upon receipt, store it immediately at the temperature recommended.

### Background

Autophagy is a highly regulated bulk degradation process that plays an important role in cellular maintenance and development. MAP1LC3C is an ortholog of the yeast autophagosome protein Atg8. Ubiquitin-like modifier that plays a crucial role in antibacterial autophagy (xenophagy) through the selective binding of CALCO2. Recruits all ATG8 family members to infecting bacteria such as S. Typhimurium.

### For Research Use Only