

Recombinant KCTD3 Monoclonal Antibody

catalog number: **AN300756L**

Note: Centrifuge before opening to ensure complete recovery of vial contents.

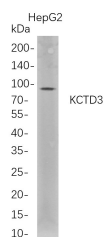
Description

Reactivity	Human
Immunogen	Recombinant Human KCTD3 protein
Host	Rabbit
Isotype	IgG, κ
Clone	B695
Purification	Protein A
Buffer	PBS, 50% glycerol, 0.05% Proclin 300, 0.05% protein protectant.

Applications Recommended Dilution

WB	1:1000-5000
-----------	-------------

Data



Western Blot with Recombinant KCTD3 Monoclonal Antibody at dilution of 1:1000 dilution. Lane A: HepG2 whole cell lysate.

Observed-MW:90 kDa

Preparation & Storage

Storage	Store at -20°C Valid for 12 months. Avoid freeze / thaw cycles.
Shipping	Ice bag

Background

This gene encodes a member of the potassium channel tetramerization-domain containing (KCTD) protein family. Members of this protein family regulate the biophysical characteristics of ion channels. In mouse, this protein interacts with hyperpolarization-activated cyclic nucleotide-gated channel complex 3 and enhances its cell surface expression and current density. Alternative splicing results in multiple transcript variants.

For Research Use Only