

EPHA6 Polyclonal Antibody

catalog number: E-AB-17824

Note: Centrifuge before opening to ensure complete recovery of vial contents.

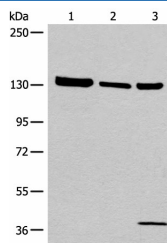
Description

Reactivity	Human;Mouse;Rat
Immunogen	Synthetic peptide of human EPHA6
Host	Rabbit
Isotype	IgG
Purification	Antigen affinity purification
Buffer	Phosphate buffered solution, pH 7.4, containing 0.05% stabilizer and 50% glycerol.

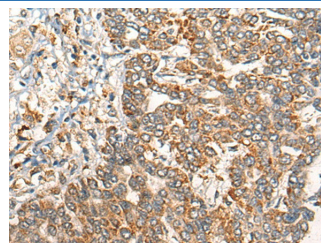
Applications Recommended Dilution

WB	1:500-1:2000
IHC	1:30-1:150

Data

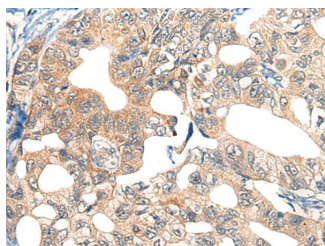


Western blot analysis of 293T cell Human testis tissue lysate
A549 cell lysates using EPHA6 Polyclonal Antibody at
dilution of 1:800



Immunohistochemistry of paraffin-embedded Human liver
cancer tissue using EPHA6 Polyclonal Antibody at dilution
of 1:40(×200)

Observed-MW:Refer to figures
Calculated-MW:116 kDa



Immunohistochemistry of paraffin-embedded Human gastric
cancer tissue using EPHA6 Polyclonal Antibody at dilution
of 1:40(×200)

Preparation & Storage

Storage	Store at -20°C Valid for 12 months. Avoid freeze / thaw cycles.
Shipping	The product is shipped with ice pack,upon receipt,store it immediately at the temperature recommended.

Background

For Research Use Only

Receptor tyrosine kinase which binds promiscuously GPI-anchored ephrin-A family ligands residing on adjacent cells, leading to contact-dependent bidirectional signaling into neighboring cells. The signaling pathway downstream of the receptor is referred to as forward signaling while the signaling pathway downstream of the ephrin ligand is referred to as reverse signaling.

For Research Use Only

Toll-free: 1-888-852-8623
Web: www.elabscience.com

Tel: 1-832-243-6086
Email: techsupport@elabscience.com

Fax: 1-832-243-6017

Rev. V1.7