

## SERPINI2 Polyclonal Antibody

**catalog number:** E-AB-65836

**Note:** Centrifuge before opening to ensure complete recovery of vial contents.

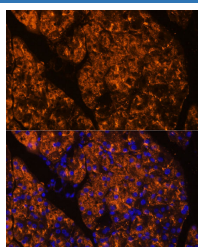
### Description

<b>Reactivity</b>	Mouse;Rat
<b>Immunogen</b>	Recombinant fusion protein of human SERPINI2 (NP_006208.1).
<b>Host</b>	Rabbit
<b>Isotype</b>	IgG
<b>Purification</b>	Affinity purification
<b>Buffer</b>	Phosphate buffered solution, pH 7.4, containing 0.05% stabilizer and 50% glycerol.

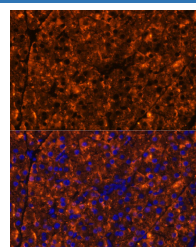
### Applications

Applications	Recommended Dilution
IF	1:50-1:100

### Data



Immunofluorescence analysis of Rat pancreas using SERPINI2 Polyclonal Antibody at dilution of 1:100 (40x lens). Blue: DAPI for nuclear staining.



Immunofluorescence analysis of Mouse pancreas using SERPINI2 Polyclonal Antibody at dilution of 1:100 (40x lens). Blue: DAPI for nuclear staining.

### Preparation & Storage

<b>Storage</b>	Store at -20°C Valid for 12 months. Avoid freeze / thaw cycles.
<b>Shipping</b>	The product is shipped with ice pack, upon receipt, store it immediately at the temperature recommended.

### Background

The gene encodes a member of a family of proteins that acts as inhibitors of serine proteases. These proteins function in the regulation of a variety of physiological processes, including coagulation, fibrinolysis, development, malignancy, and inflammation. Expression of the encoded protein may be downregulated during pancreatic carcinogenesis. Alternative splicing results in multiple transcript variants for this gene.

### For Research Use Only