

## FITC Anti-Human IL-1 beta Antibody[CRM56]

Catalog Number: GFH00842C

**Note:** Centrifuge before opening to ensure complete recovery of vial contents.

### Description

Reactivity	Human
Host	Mouse
Isotype	Mouse IgG1, $\kappa$
Clone No.	CRM56
Isotype Control	FITC Mouse IgG1, $\kappa$ Isotype Control[MOPC-21] [Product GFH09792C]
Conjugation	FITC
Conjugation Information	FITC is designed to be excited by the Blue laser (488 nm) and detected using an optical filter centered near 530 nm (e.g., a 525/40 nm bandpass filter).
Storage Buffer	Phosphate buffered solution, pH 7.2, containing 0.09% sodium azide.

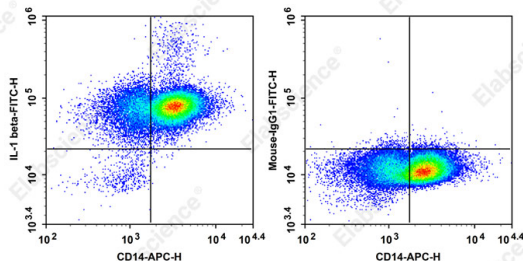
### Applications

### Recommended usage

#### FCM

Each lot of this antibody is quality control tested by flow cytometric analysis. **The amount of the reagent is suggested to be used 5  $\mu$ L of antibody per test (million cells in 100  $\mu$ L staining volume or per 100  $\mu$ L of whole blood).** Please check your vial before the experiment. Since applications vary, the appropriate dilutions must be determined for individual use.

### Data



Staining of blood peripheral blood mononuclear cells stimulated with LPS in the presence of Brefeldin A for 4 hours Anti-Human CD14 APC followed by intracellularly Anti-Human IL-1 beta PE.

### Preparation & Storage

Storage	Keep as concentrated solution. This product can be stored at 2-8°C for 12 months. Please protected from prolonged exposure to light and do not freeze.
Shipping	Ice bag

### Antigen Information

Alternate Names	IL-1 beta; IL1B; IL1F2; IL-1; IL-1beta抗体; beta流式抗体; 人IL-1 beta; 人IL-1 beta流式抗体; GFH00842
Uniprot ID	P01584
Gene ID	3553

### For Research Use Only

## Background

The CRM56 antibody reacts with human and baboon interleukin-1 beta; (IL-1 beta). IL-1 beta is a 17 kDa factor secreted primarily by monocytes. IL-1 has effects on T-helper cells, inducing IL-2 secretion and expression of IL-2 receptors. IL-1 has effects on B cells, promoting cell proliferation and immunoglobulin synthesis.