

IGSF3 Monoclonal Antibody

catalog number: **AN200212P**

Note: Centrifuge before opening to ensure complete recovery of vial contents.

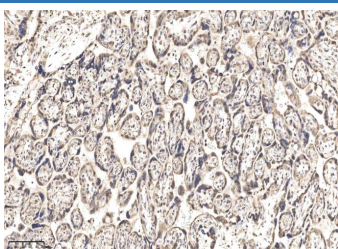
Description

Reactivity	Human
Immunogen	Recombinant Human IGSF3 protein
Host	Mouse
Isotype	IgG2a
Clone	9D4
Purification	Protein A
Buffer	0.2 µm filtered solution in PBS

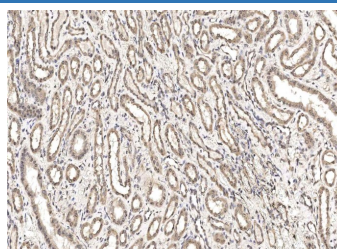
Applications Recommended Dilution

IHC-P	1:50-1:200
FCM	1:25-1:100

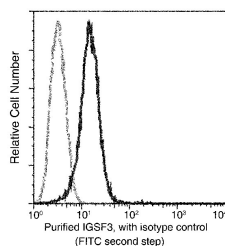
Data



Immunohistochemistry of paraffin-embedded human placenta using IGSF3 Monoclonal Antibody at dilution of 1:100.



Immunohistochemistry of paraffin-embedded human kidney using IGSF3 Monoclonal Antibody at dilution of 1:100.



Flow cytometric analysis of Human IGSF3 expression on A549 cells. Cells were stained with purified anti-Human IGSF3, then a FITC-conjugated second step antibody. The histogram were derived from gated events with the forward and side light-scatter characteristics of intact cells.

Preparation & Storage

Storage	This antibody can be stored at 2°C-8°C for one month without detectable loss of activity. Antibody products are stable for twelve months from date of receipt when stored at -20°C to -80°C. Preservative-Free. Avoid repeated freeze-thaw cycles.
Shipping	Ice bag

Background

The protein encoded by this gene is an immunoglobulin-like membrane protein containing several V-type Ig-like domains. A mutation in this gene has been associated with bilateral nasolacrimal duct obstruction (LCDD).

For Research Use Only