

Cyclin B1 Polyclonal Antibody

catalog number: E-AB-70114

Note: Centrifuge before opening to ensure complete recovery of vial contents.

Description

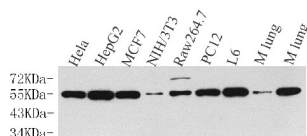
Reactivity	Human;Mouse;Rat
Immunogen	KLH conjugated Synthetic peptide corresponding to Mouse Cyclin B1
Host	Rabbit
Isotype	IgG
Purification	Affinity purification
Conjugation	Unconjugated
Buffer	Phosphate buffered solution, pH 7.4, containing 0.05% stabilizer, 1% protein protectant and 50% glycerol.

Applications

Recommended Dilution

WB	1:500-1:2000
IHC	1:300-1:500
IF	1:100-1:300

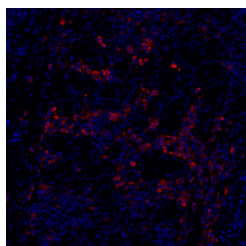
Data



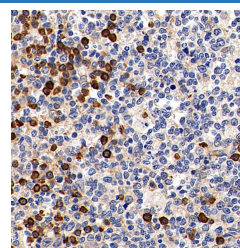
Western Blot analysis of various samples using Cyclin B1 Polyclonal Antibody at dilution of 1:500.

Observed-MW:55 kDa

Calculated-MW:55 kDa



Immunofluorescence analysis of paraffin-embedded Human lung cancer using Cyclin B1 Polyclonal Antibody at dilution of 1:100.



Immunohistochemistry analysis of paraffin-embedded Human tonsil using Cyclin B1 Polyclonal Antibody at dilution of 1:300.

Preparation & Storage

Storage	Store at -20°C Valid for 12 months. Avoid freeze / thaw cycles.
Shipping	The product is shipped with ice pack, upon receipt, store it immediately at the temperature recommended.

Background

For Research Use Only

G2/mitotic-specific cyclin-B1 is a protein that in humans is encoded by the CCNB1 gene. The protein encoded by this gene is a regulatory protein involved in mitosis. The gene product complexes with p34(cdc2) to form the maturation-promoting factor (MPF). Two alternative transcripts have been found, a constitutively expressed transcript and a cell cycle-regulated transcript, that is expressed predominantly during G2/M phase. The different transcripts result from the use of alternate transcription initiation sites.