

## Recombinant Human EDAR/DL Protein (Fc Tag)

**Catalog Number:** PKSH031081

**Note:** Centrifuge before opening to ensure complete recovery of vial contents.

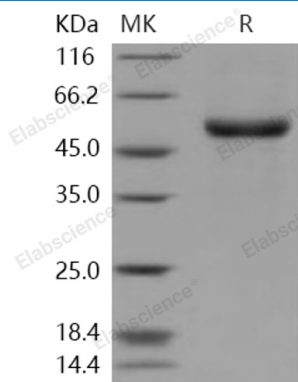
### Description

<b>Species</b>	Human
<b>Source</b>	HEK293 Cells-derived Human EDAR/DL protein Met 1-Ile 189, with an C-terminal hFc
<b>Calculated MW</b>	44.6 kDa
<b>Observed MW</b>	52 kDa
<b>Accession</b>	NP_071731.1
<b>Bio-activity</b>	Not validated for activity

### Properties

<b>Purity</b>	> 96 % as determined by reducing SDS-PAGE.
<b>Endotoxin</b>	< 1.0 EU per µg of the protein as determined by the LAL method.
<b>Storage</b>	Generally, lyophilized proteins are stable for up to 12 months when stored at -20 to -80 °C. Reconstituted protein solution can be stored at 4-8°C for 2-7 days. Aliquots of reconstituted samples are stable at < -20°C for 3 months.
<b>Shipping</b>	This product is provided as lyophilized powder which is shipped with ice packs.
<b>Formulation</b>	Lyophilized from sterile PBS, pH 7.4 Normally 5% - 8% trehalose, mannitol and 0.01% Tween 80 are added as protectants before lyophilization. Please refer to the specific buffer information in the printed manual.
<b>Reconstitution</b>	Please refer to the printed manual for detailed information.

### Data



> 96 % as determined by reducing SDS-PAGE.

### Background

Tumor necrosis factor receptor superfamily member EDAR is a Single-pass type I membrane protein. Edar was expressed reiteratively in signaling centers regulating key steps in morphogenesis. activin signaling from mesenchyme induces the expression of the TNF receptor edar in the epithelial signaling centers; thus making them responsive to Wnt-induced ectodysplasin from the nearby ectoderm. This is the first demonstration of integration of the Wnt; activin; and TNF signaling pathways. Defects in EDAR are a cause of ectodermal dysplasia anhidrotic (EDA); also known ectodermal dysplasia hypohidrotic autosomal recessive (HED). Ectodermal dysplasia defines a heterogeneous group of disorders due to abnormal development of two or more ectodermal structures. EDA is characterized by sparse hair (atrachosis or hypotrichosis); abnormal or missing teeth and the inability to sweat due to the absence of sweat glands.

### For Research Use Only