

## COL3A1 Polyclonal Antibody

**catalog number: E-AB-10250**

**Note:** Centrifuge before opening to ensure complete recovery of vial contents.

### Description

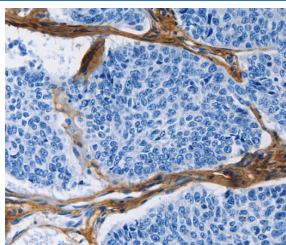
<b>Reactivity</b>	Human;Mouse;Rat
<b>Immunogen</b>	Recombinant protein of human COL3A1
<b>Host</b>	Rabbit
<b>Isotype</b>	IgG
<b>Purification</b>	Affinity purification
<b>Buffer</b>	Phosphate buffered solution, pH 7.4, containing 0.05% stabilizer and 50% glycerol.

### Applications

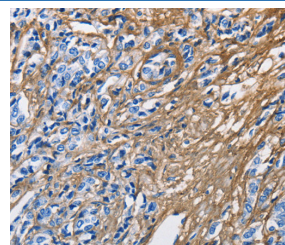
<b>IHC</b>	1:50-1:200
------------	------------

### Recommended Dilution

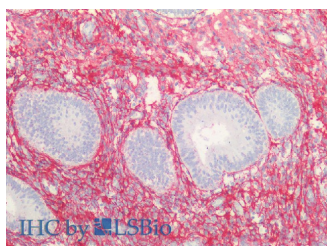
### Data



Immunohistochemistry of paraffin-embedded Human lung cancer tissue using COL3A1 Polyclonal Antibody at dilution 1:60



Immunohistochemistry of paraffin-embedded Human prostate cancer tissue using COL3A1 Polyclonal Antibody at dilution 1:60



Immunohistochemistry of paraffin-embedded Human endometrium and prostate using COL3A1 Polyclonal Antibody at dilution of 1:100(Elabscience Product Detected by Lifespan).

### Preparation & Storage

<b>Storage</b>	Store at -20°C Valid for 12 months. Avoid freeze / thaw cycles.
<b>Shipping</b>	The product is shipped with ice pack, upon receipt, store it immediately at the temperature recommended.

### Background

This gene encodes the pro- $\alpha 1$  chains of type III collagen, a fibrillar collagen that is found in extensible connective tissues such as skin, lung, uterus, intestine and the vascular system, frequently in association with type I collagen. Mutations in this gene are associated with Ehlers-Danlos syndrome types IV, and with aortic and arterial aneurysms. Two transcripts, resulting from the use of alternate polyadenylation signals, have been identified for this gene.

### For Research Use Only