

## Cyt-C Polyclonal Antibody

**catalog number: D-AB-10419L**

**Note:** Centrifuge before opening to ensure complete recovery of vial contents.

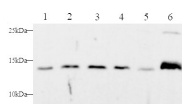
### Description

|                     |  |
|---------------------|--|
| <b>Reactivity</b>   | Human;Mouse  |
| <b>Immunogen</b>    | Recombinant Human Cyt-C protein expressed by E.coli                      |
| <b>Host</b>         | Rabbit   |
| <b>Isotype</b>      | IgG  |
| <b>Purification</b> | Antigen Affinity Purification  |
| <b>Buffer</b>       | PBS with 0.05% Proclin300, 1% protective protein and 50% glycerol, pH7.4 |

### Applications Recommended Dilution

|           |             |
|-----------|-------------|
| <b>WB</b> | 1:250-1:500 |
|-----------|-------------|

### Data



Western blot with Cyt-C Polyclonal antibody at dilution of 1:500. lane 1: HepG2 whole cell lysate, lane 2: MCF-7 whole cell lysate, lane 3: Jurkat whole cell lysate, lane 4: Molt-4 whole cell lysate, lane 5: C2C12 whole cell lysate, lane 6: Mouse brain

**Observed-MW: 14 kDa**

**Calculated-MW: 12 kDa**

### Preparation & Storage

|                 |  |
|-----------------|--|
| <b>Storage</b>  | Store at -20°C Valid for 12 months. Avoid freeze / thaw cycles.  |
| <b>Shipping</b> | The product is shipped with ice pack, upon receipt, store it immediately at the temperature recommended. |

### Background

Cytochrome c is a 12-15 kDa electron transporting protein located in the inner mitochondrial membrane. As a part of respiratory chain, cytochrome c plays a critical role in the process of oxidative phosphorylation and ATP producing. Besides, cytochrome c also gets implicated in apoptosis process. Upon apoptotic stimulation, cytochrome c can be released from mitochondria into cytoplasm, which is required for caspase-3 activation and the occurrence of apoptosis.

### For Research Use Only