

Myc-Tag Polyclonal Antibody

catalog number: E-AB-40524

Note: Centrifuge before opening to ensure complete recovery of vial contents.

Description

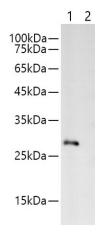
Reactivity	All
Immunogen	Synthetic peptide corresponding to Myc tag conjugated to keyhole limpet haemocyanin.
Host	Rabbit
Isotype	IgG
Purification	Antigen Affinity Purification
Buffer	PBS with 0.05% Proclin300, 1% protective protein and 50% glycerol, pH7.4

Applications

Recommended Dilution

WB	1:500-10000
-----------	-------------

Data



Western blotting with Anti-MYC rabbit polyclonal antibody at dilution of 1:1000. Lane1: MYC tag transfected HEK 293 whole cell lysate, Lane2: HEK 293 whole cell lysate

Observed-MW:28 kDa

Calculated-MW:28 kDa

Preparation & Storage

Storage	Store at -20°C Valid for 12 months. Avoid freeze / thaw cycles.
Shipping	The product is shipped with ice pack, upon receipt, store it immediately at the temperature recommended.

Background

The MYC tag, derived from the c-MYC protein, is a popular epitope tag for detecting the expression of recombinant proteins in yeast, bacteria, insect, and mammalian cell systems. It can be used for affinity chromatography, then used to separate recombin

For Research Use Only