

Recombinant Human Sas-6 protein (His Tag)

Catalog Number: PDEH101029

Note: Centrifuge before opening to ensure complete recovery of vial contents.

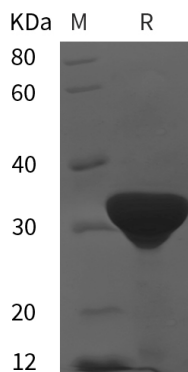
Description

Species	Human
Source	E.coli-derived Human Sas-6 protein Ser201-Glu420, with an N-terminal His & C-terminal His
Calculated MW	24.1 kDa
Observed MW	32 kDa
Accession	Q6UVJ0
Bio-activity	Not validated for activity

Properties

Purity	> 95% as determined by reducing SDS-PAGE.
Endotoxin	< 10 EU/mg of the protein as determined by the LAL method
Storage	Generally, lyophilized proteins are stable for up to 12 months when stored at -20 to -80 °C. Reconstituted protein solution can be stored at 4-8°C for 2-7 days. Aliquots of reconstituted samples are stable at < -20°C for 3 months.
Shipping	This product is provided as lyophilized powder which is shipped with ice packs.
Formulation	Lyophilized from a 0.2 µm filtered solution in PBS with 5% Trehalose and 5% Mannitol.
Reconstitution	It is recommended that sterile water be added to the vial to prepare a stock solution of 0.5 mg/mL. Concentration is measured by UV-Vis.

Data



> 95 % as determined by reducing SDS-PAGE.

Background

SASS6 (Spindle assembly abnormal protein 6 homolog) is required for centrosome duplication. It functions to ensure that each centriole seeds the formation of a single procentriole per cell cycle. Overexpression results in excess foci bearing centriolar markers.