

## MLST8 Polyclonal Antibody

catalog number: **E-AB-19888**

**Note:** Centrifuge before opening to ensure complete recovery of vial contents.

### Description

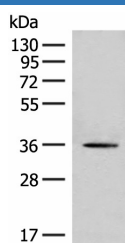
|                     |  |
|---------------------|--|
| <b>Reactivity</b>   | Human;Mouse;Rat  |
| <b>Immunogen</b>    | Synthetic peptide of human MLST8   |
| <b>Host</b>         | Rabbit   |
| <b>Isotype</b>      | IgG  |
| <b>Purification</b> | Antigen affinity purification  |
| <b>Buffer</b>       | Phosphate buffered solution, pH 7.4, containing 0.05% stabilizer and 50% glycerol. |

### Applications

### Recommended Dilution

|           |              |
|-----------|--------------|
| <b>WB</b> | 1:500-1:2000 |
|-----------|--------------|

### Data



Western blot analysis of Hela cell lysate using MLST8 Polyclonal Antibody at dilution of 1:500

**Observed-MW:Refer to figures**

**Calculated-MW:36 kDa**

### Preparation & Storage

|                 |  |
|-----------------|--|
| <b>Storage</b>  | Store at -20°C Valid for 12 months. Avoid freeze / thaw cycles.  |
| <b>Shipping</b> | The product is shipped with ice pack,upon receipt,store it immediately at the temperature recommended. |

### Background

MLST8 (MTOR Associated Protein, LST8 Homolog) is a Protein Coding gene. Diseases associated with MLST8 include Benign Familial Neonatal Epilepsy and Childhood Absence Epilepsy. Among its related pathways are Constitutive Signaling by AKT1 E17K in Cancer and RET signaling.

### For Research Use Only