

## alpha Tubulin Monoclonal Antibody

catalog number: AN005320L

**Note:** Centrifuge before opening to ensure complete recovery of vial contents.

### Description

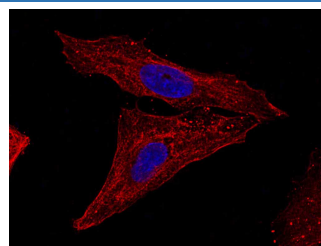
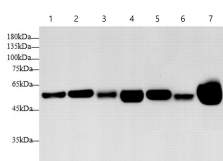
<b>Reactivity</b>	Human;Mouse;Rat
<b>Immunogen</b>	Recombinant human TUBA1B protein by E.coli
<b>Host</b>	Mouse
<b>Isotype</b>	IgG
<b>Clone</b>	2H2
<b>Purification</b>	Protein A/G Purification
<b>Conjugation</b>	Unconjugated
<b>Buffer</b>	PBS with 0.05% Proclin300, 1% protective protein and 50% glycerol, pH7.4

### Applications

### Recommended Dilution

<b>WB</b>	1:2000-1:4000
<b>IF</b>	1:200-1:400

### Data



Western blot with Anti alpha Tubulin Monoclonal Antibody at dilution of 1:3000. Lane 1: HeLa cell lysate, Lane 2: MCF-7 cell lysate, Lane 3: HT-29 cell lysate, Lane 4: Hep G2 cell lysate, Lane 5: Mouse brain tissue lysate, Lane 6: Mouse kidney tissue lysate, Lane 7: Rat brain tissue lysate.

**Observed-MW:55 kDa**

**Calculated-MW:55 kDa**

Immunofluorescence analysis of U-2 OS cells using alpha Tubulin Monoclonal Antibody at dilution of 1:200.

### Preparation & Storage

<b>Storage</b>	Store at -20°C Valid for 12 months. Avoid freeze / thaw cycles.
<b>Shipping</b>	The product is shipped with ice pack, upon receipt, store it immediately at the temperature recommended.

### Background

Tubulin is the major constituent of microtubules, a cylinder consisting of laterally associated linear protofilaments composed of alpha- and beta-tubulin heterodimers. Microtubules grow by the addition of GTP-tubulin dimers to the microtubule end, where a stabilizing cap forms. Below the cap, tubulin dimers are in GDP-bound state, owing to GTPase activity of alpha-tubulin.

### For Research Use Only