

MTCO2 Polyclonal Antibody

catalog number: **E-AB-93219**

Note: Centrifuge before opening to ensure complete recovery of vial contents.

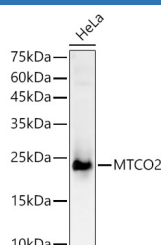
Description

Reactivity	Human;Mouse;Rat
Immunogen	A synthetic peptide of human MTCO2
Host	Rabbit
Isotype	IgG
Purification	Affinity purification
Buffer	Phosphate buffered solution, pH 7.4, containing 0.05% stabilizer and 50% glycerol.

Applications Recommended Dilution

WB	1:500-1:2000
-----------	--------------

Data



Western blot analysis of HeLa using MTCO2 Polyclonal Antibody at 1:2000 dilution.

Observed-MW:21 kDa

Calculated-MW:25 kDa

Preparation & Storage

Storage	Store at -20°C Valid for 12 months. Avoid freeze / thaw cycles.
Shipping	The product is shipped with ice pack, upon receipt, store it immediately at the temperature recommended.

Background

MT-CO2 (mitochondrially encoded cytochrome c oxidase II) is a protein-coding gene. Diseases associated with MT-CO2 include cerebral aneurysms, and osteoblastoma.

For Research Use Only