

## L-Selectin/CD62L Polyclonal Antibody(Capture/Detector)

catalog number: AN003950P

**Note:** Centrifuge before opening to ensure complete recovery of vial contents.

### Description

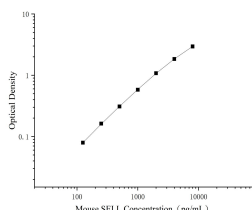
<b>Reactivity</b>	Mouse
<b>Immunogen</b>	Recombinant Mouse L-Selectin/CD62L Protein expressed by Mammalian
<b>Host</b>	Rabbit
<b>Isotype</b>	Rabbit IgG
<b>Purification</b>	Antigen Affinity Purification
<b>Conjugation</b>	Unconjugated
<b>Buffer</b>	Phosphate buffered solution, pH 7.2, containing 0.05% proclin 300.

### Applications

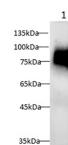
### Recommended Dilution

<b>ELISA Capture</b>	2-8 µg/mL
<b>ELISA Detector</b>	0.1-0.4 µg/mL
<b>WB</b>	1:500-1:1000

### Data



Sandwich ELISA-Recombinant Mouse L-Selectin/CD62L Protein standard curve. Background subtracted standard curve using Anti-L-Selectin/CD62L antibody(AN003950P) (Capture), Anti-L-Selectin/CD62L antibody(AN003950P) (Detector). The reference range value is 125.0 - 8,000 pg/mL for mouse.



Western blot with Anti L-Selectin/CD62L Polyclonal antibody at dilution of 1:1000. Lane 1: Mouse serum.

**Observed-MV: 80-100 kDa**

**Calculated-MV: 42 kDa**

### Preparation & Storage

<b>Storage</b>	Store at 4°C valid for 12 months or -20°C valid for long term storage, avoid freeze / thaw cycles.
<b>Shipping</b>	The product is shipped with ice pack, upon receipt, store it immediately at the temperature recommended.

### Background

This gene encodes a cell surface adhesion molecule that belongs to a family of adhesion/homing receptors. The encoded protein contains a C-type lectin-like domain, a calcium-binding epidermal growth factor-like domain, and two short complement-like repeats. The gene product is required for binding and subsequent rolling of leucocytes on endothelial cells, facilitating their migration into secondary lymphoid organs and inflammation sites. Single-nucleotide polymorphisms in this gene have been associated with various diseases including immunoglobulin A nephropathy. Alternatively spliced transcript variants have been found for this gene.

### For Research Use Only