

EEF2 Polyclonal Antibody

catalog number: D-AB-10182L

Note: Centrifuge before opening to ensure complete recovery of vial contents.

Description

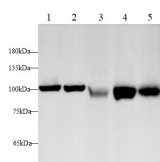
Reactivity	Human;Mouse;Rat
Immunogen	Recombinant Human EEF2 protein expressed by E.coli
Host	Rabbit
Isotype	IgG
Purification	Antigen Affinity Purification
Conjugation	Unconjugated
Buffer	PBS with 0.05% Proclin300, 1% protective protein and 50% glycerol, pH7.4

Applications

Recommended Dilution

WB	1:500-1:1000
IF	1:50-1:200

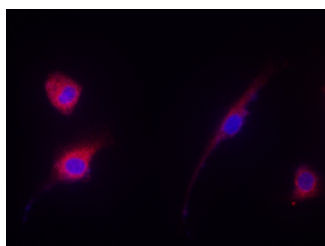
Data



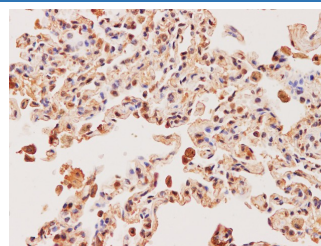
Western blot with EEF2 Polyclonal antibody at dilution of 1:500. lane 1: A431 whole cell lysate, lane 2: HeLa whole cell lysate, lane 3: NIH/3T3 whole cell lysate, lane 4: C6 whole cell lysate, lane 5: PC-12 whole cell lysate

Observed-MW: 100 kDa

Calculated-MW: 95 kDa



Immunofluorescence analysis of NIH/3T3 cells using EEF2 Polyclonal Antibody at dilution of 1:200



Immunohistochemistry of paraffin-embedded Human lung using EEF2 Polyclonal Antibody at dilution of 1:200

Preparation & Storage

Storage	Store at -20°C Valid for 12 months. Avoid freeze / thaw cycles.
Shipping	The product is shipped with ice pack, upon receipt, store it immediately at the temperature recommended.

Background

For Research Use Only

This gene encodes a member of the GTP-binding translation elongation factor family. This protein is an essential factor for protein synthesis. It promotes the GTP-dependent translocation of the nascent protein chain from the A-site to the P-site of the ribosome. This protein is completely inactivated by EF-2 kinase phosphorylation.