

ENPP6 Polyclonal Antibody

catalog number: E-AB-90395

Note: Centrifuge before opening to ensure complete recovery of vial contents.

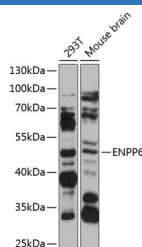
Description

Reactivity	Human;Mouse
Immunogen	Recombinant fusion protein of human ENPP6
Host	Rabbit
Isotype	IgG
Purification	Affinity purification
Buffer	Phosphate buffered solution, pH 7.4, containing 0.05% stabilizer and 50% glycerol.

Applications

WB	1:500-1:2000
-----------	--------------

Data



Western blot analysis of extracts of various cell lines using ENPP6 Polyclonal Antibody at 1:1000 dilution.

Observed-MV:50 kDa

Calculated-MV:50 kDa

Preparation & Storage

Storage	Store at -20°C Valid for 12 months. Avoid freeze / thaw cycles.
Shipping	The product is shipped with ice pack, upon receipt, store it immediately at the temperature recommended.

Background

Choline-specific glycerophosphodiesterase that hydrolyzes glycerophosphocholine (GPC and lysophosphatidylcholine (LPC and contributes to supplying choline to the cells. Has a preference for LPC with short (12:0 and 14:0 or polyunsaturated (18:2 and 20:4 fatty acids. In vitro, hydrolyzes only choline-containing lysophospholipids, such as sphingosylphosphorylcholine (SPC, platelet-activating factor (PAF and lysoPAF, but not other lysophospholipids (By similarity.

For Research Use Only