

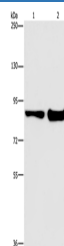
MAPRE3 Polyclonal Antibody

catalog number: E-AB-14969

Note: Centrifuge before opening to ensure complete recovery of vial contents.

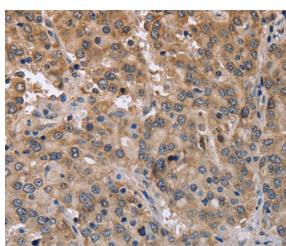
Description	
Reactivity	Human;Mouse
Immunogen	Recombinant protein of human ECE1
Host	Rabbit
Isotype	IgG
Purification	Affinity purification
Conjugation	Unconjugated
Buffer	Phosphate buffered solution, pH 7.4, containing 0.05% stabilizer and 50% glycerol.
Applications	Recommended Dilution
WB	1:1000-1:5000
IHC	1:50-1:200

Data

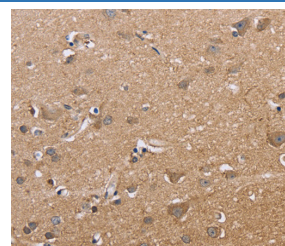


Western Blot analysis of Mouse lung and liver tissue using MAPRE3 Polyclonal Antibody at dilution of 1:1050

Calculated-MW:87 kDa



Immunohistochemistry of paraffin-embedded Human liver cancer using MAPRE3 Polyclonal Antibody at dilution of 1:50



Immunohistochemistry of paraffin-embedded Human brain using MAPRE3 Polyclonal Antibody at dilution of 1:50

Preparation & Storage	
Storage	Store at -20°C Valid for 12 months. Avoid freeze / thaw cycles.
Shipping	The product is shipped with ice pack, upon receipt, store it immediately at the temperature recommended.

Background	
The protein encoded by this gene is involved in proteolytic processing of endothelin precursors to biologically active peptides. Mutations in this gene are associated with Hirschsprung disease, cardiac defects and autonomic dysfunction. Alternatively spliced transcript variants encoding different isoforms have been noted for this gene.	

For Research Use Only