

Recombinant Human POSTN/OSF-2 protein (His Tag)

Catalog Number: PDEH100842



Note: Centrifuge before opening to ensure complete recovery of vial contents.

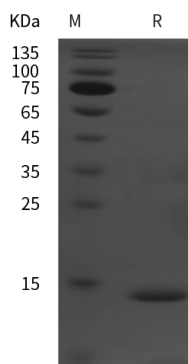
Description

Species	Human
Mol_Mass	14.6 kDa
Accession	Q15063
Bio-activity	Not validated for activity

Properties

Purity	> 95% as determined by reducing SDS-PAGE.
Endotoxin	< 10 EU/mg of the protein as determined by the LAL method
Storage	Generally, lyophilized proteins are stable for up to 12 months when stored at -20 to -80 °C. Reconstituted protein solution can be stored at 4-8°C for 2-7 days. Aliquots of reconstituted samples are stable at < -20°C for 3 months.
Shipping	This product is provided as lyophilized powder which is shipped with ice packs.
Formulation	Lyophilized from a 0.2 µm filtered solution in PBS with 5% Trehalose and 5% Mannitol.
Reconstitution	It is recommended that sterile water be added to the vial to prepare a stock solution of 0.5 mg/mL. Concentration is measured by UV-Vis.

Data



> 95 % as determined by reducing SDS-PAGE.

Background

Periostin (POSTN), also known as OSF2 (osteoblast specific factor 2), is a heterofunctional secreted extracellular matrix (ECM) protein comprised of four fasciclin domains that promotes cellular adhesion and movement, as well as collagen fibrillogenesis. Postn is expressed in unique growth centers during embryonic development where it facilitates epithelial-mesenchymal transition (EMT) of select cell populations undergoing reorganization. In the adult, Postn expression is specifically induced in areas of tissue injury or areas with ongoing cellular re-organization. In the adult heart Postn is induced in the ventricles following myocardial infarction, pressure overload stimulation, or generalized cardiomyopathy. Although the detailed function of Postn is still unclear, Postn-integrin interaction is thought to be involved in tumor development. Postn is frequently overexpressed in various types of human cancers, stimulating metastatic growth by promoting cancer cell survival, invasion and angiogenesis, and can be a useful marker to predict the behavior of cancer.

For Research Use Only

A Reliable Research Partner in Life Science and Medicine
Tel:400-999-2100

Email:techsupport@elabscience.cn

Web:www.elabscience.cn

Rev. V1.2