

Recombinant Human SUMO3/SMT3A Protein (His Tag)

Catalog Number: PKSH033070

Note: Centrifuge before opening to ensure complete recovery of vial contents.

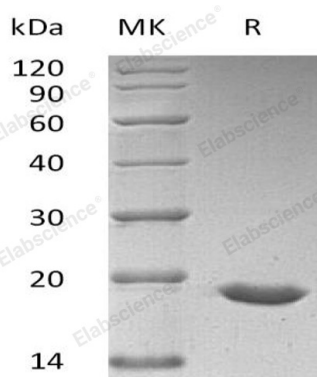
Description

Species	Human
Source	E.coli-derived Human SUMO3;SMT3A protein Met 1-Phe103, with an N-terminal His
Calculated MW	13.8 kDa
Observed MW	19 kDa
Accession	P55854
Bio-activity	Not validated for activity

Properties

Purity	> 95 % as determined by reducing SDS-PAGE.
Endotoxin	< 1.0 EU per µg of the protein as determined by the LAL method.
Storage	Generally, lyophilized proteins are stable for up to 12 months when stored at -20 to -80°C. Reconstituted protein solution can be stored at 4-8°C for 2-7 days. Aliquots of reconstituted samples are stable at < -20°C for 3 months.
Shipping	This product is provided as lyophilized powder which is shipped with ice packs.
Formulation	Lyophilized from a 0.2 µm filtered solution of 20mM PB, 150mM NaCl, pH 7.2. Normally 5% - 8% trehalose, mannitol and 0.01% Tween 80 are added as protectants before lyophilization.
Reconstitution	Please refer to the specific buffer information in the printed manual.

Data



> 95 % as determined by reducing SDS-PAGE.

Background

SUMO3 belongs to the SUMO protein family and operates like ubiquitin. Ubiquitin-like protein which can be covalently attached to target lysines either as a monomer or as a lysine-linked polymer. Nevertheless unlike ubiquitin that targets proteins for degradation; SUMO3 takes part in several cellular processes; such as nuclear transport; transcription regulation; apoptosis and protein stability. SUMO3 participates in amyloid beta generation and has a key role in the onset or progression of Alzheimer's disease.

For Research Use Only

Toll-free: 1-888-852-8623
Web: www.elabscience.com

Tel: 1-832-243-6086
Email: techsupport@elabscience.com

Fax: 1-832-243-6017