

## Recombinant Human IL-22BP/IL22RA2 Protein (His Tag)

**Catalog Number:** PKSH031300

**Note:** Centrifuge before opening to ensure complete recovery of vial contents.

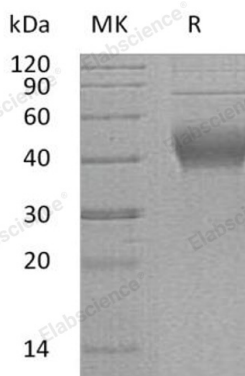
### Description

<b>Species</b>	Human
<b>Source</b>	HEK293 Cells-derived Human IL-22BP/IL22RA2 protein Met 1-Pro 231, with an C-terminal His
<b>Calculated MW</b>	26.1 kDa
<b>Observed MW</b>	50-55 kDa
<b>Accession</b>	NP_851826.1
<b>Bio-activity</b>	Immobilized IL22BP-His at 10 µg/ml (100 µl/well) can bind biotinylated IL22, The EC <sub>50</sub> of biotinylated IL22 is 1.78-4.14 ng/ml.

### Properties

<b>Purity</b>	> 95 % as determined by reducing SDS-PAGE.
<b>Endotoxin</b>	< 1.0 EU per µg of the protein as determined by the LAL method.
<b>Storage</b>	Generally, lyophilized proteins are stable for up to 12 months when stored at -20 to -80 °C. Reconstituted protein solution can be stored at 4-8°C for 2-7 days. Aliquots of reconstituted samples are stable at < -20°C for 3 months.
<b>Shipping</b>	This product is provided as lyophilized powder which is shipped with ice packs.
<b>Formulation</b>	Lyophilized from sterile PBS, pH 7.4 Normally 5% - 8% trehalose, mannitol and 0.01% Tween 80 are added as protectants before lyophilization. Please refer to the specific buffer information in the printed manual.
<b>Reconstitution</b>	Please refer to the printed manual for detailed information.

### Data



> 95 % as determined by reducing SDS-PAGE.

### Background

#### For Research Use Only

Interleukin-22 receptor subunit alpha-2 (IL-22RA2); also known as interleukin-22-binding protein (IL-22BP); is a subunit of the receptor for interleukin 22. IL-22BP belongs to the type I I cytokine receptor family and contains 3 fibronectin type-III domains. IL-22BP/IL-22RA2 is expressed in a range of tissues; including those in the digestive; female reproductive; and immune systems. It is expressed in placenta; spleen; breast; skin and lung. It is also detected in intestinal tract; testis; brain; heart and thymus. The dominant cell types expressing IL-22BP/IL-22RA2 were mononuclear cells and epithelium. IL-22BP/IL-22RA2 may play an important role as an IL-22 antagonist in the regulation of inflammatory responses. Interleukin-22 (IL-22) is a member of IL-10 family. It is produced by T cells and induces the production of acute-phase reactants. IL-22 plays important roles in immune response through activation of the STAT 3 signal transduction pathway. Two types of IL-22-binding receptor have been discovered; a membrane-bound receptor and a soluble receptor.

## For Research Use Only

Toll-free: 1-888-852-8623

Web: [www.elabscience.com](http://www.elabscience.com)

Tel: 1-832-243-6086

Email: [techsupport@elabscience.com](mailto:techsupport@elabscience.com)

Fax: 1-832-243-6017