

## HMG20B Polyclonal Antibody

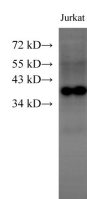
catalog number: E-AB-40258

**Note:** Centrifuge before opening to ensure complete recovery of vial contents.

Description	
<b>Reactivity</b>	Human
<b>Immunogen</b>	Recombinant Human SWI/SNF-related matrix-associated actin-dependent regulator of chromatin subfamily E member 1-related protein
<b>Host</b>	Rabbit
<b>Isotype</b>	IgG
<b>Purification</b>	Antigen Affinity Purification
<b>Conjugation</b>	Unconjugated
<b>Buffer</b>	PBS with 0.05% proclin 300, 1% protective protein and 50% glycerol, pH7.4

Applications	Recommended Dilution
WB	1:1000-1:2000

### Data



Western Blot analysis of Jurkat cells using HMG20B  
Polyclonal Antibody at dilution of 1:1000

**Observed-MW:38 kDa**

**Calculated-MW:36,33,25 kDa**

Preparation & Storage	
<b>Storage</b>	Store at -20°C Valid for 12 months. Avoid freeze / thaw cycles.
<b>Shipping</b>	The product is shipped with ice pack, upon receipt, store it immediately at the temperature recommended.

**Background**

HMG20B (High Mobility Group 20B) is a Protein Coding gene. Among its related pathways are Response to elevated platelet cytosolic Ca<sup>2+</sup> and Activated PKN1 stimulates transcription of AR (androgen receptor) regulated genes KLK2 and KLK3. Gene Ontology (GO) annotations related to this gene include protein heterodimerization activity and chromatin binding. An important paralog of this gene is HMG20A.