

## Recombinant Human Signal Transducer CD24/CD24 (C-mFc)

**Catalog Number: PKSH033949**

**Note:** Centrifuge before opening to ensure complete recovery of vial contents.

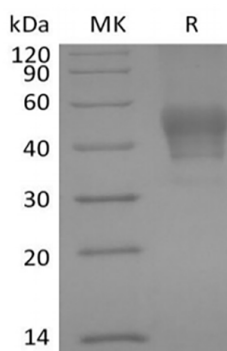
### Description

<b>Species</b>	Human
<b>Source</b>	HEK293 Cells-derived Human CD24 protein Ser27-Gly59, with an C-terminal mFc
<b>Calculated MW</b>	29.5 kDa
<b>Observed MW</b>	40-60 kDa
<b>Accession</b>	P25063
<b>Bio-activity</b>	Not validated for activity

### Properties

<b>Purity</b>	> 95 % as determined by reducing SDS-PAGE.
<b>Endotoxin</b>	< 1.0 EU per µg of the protein as determined by the LAL method.
<b>Storage</b>	Generally, lyophilized proteins are stable for up to 12 months when stored at -20 to -80 °C. Reconstituted protein solution can be stored at 4-8°C for 2-7 days. Aliquots of reconstituted samples are stable at < -20°C for 3 months.
<b>Shipping</b>	This product is provided as lyophilized powder which is shipped with ice packs.
<b>Formulation</b>	Lyophilized from a 0.2 µm filtered solution of PBS, pH 7.4. Normally 5% - 8% trehalose, mannitol and 0.01% Tween 80 are added as protectants before lyophilization. Please refer to the specific buffer information in the printed manual.
<b>Reconstitution</b>	Please refer to the printed manual for detailed information.

### Data



> 95 % as determined by reducing SDS-PAGE.

### Background

Signal Transducer CD24 is a heavily and variably glycosylated GPI-linked sialoprotein. Human CD24 is expressed on B lineage cells and granulocytes, on epithelial, neuronal, and muscle cells, and on a range of tumor cells. CD24 expression is regulated during lineage development and with the activation of various cell types. Antibody crosslinking of CD24 enhances the induction of apoptosis in B and T lymphocytes which contributes to negative selection and the induction of immune tolerance. CD24 on antigen presenting cells cooperates with B7 molecules in the costimulation of T cells. CD24 associates in cis with Siglec10 and with the danger-associated molecules HMGB1, HSP70, or HSP90 which are released from necrotic or damaged cells. Formation of these ternary complexes fills a protective role: the resulting Siglec10 signaling inhibits inflammatory responses that are otherwise induced by extracellular DAMPs.

### For Research Use Only