

Elab Fluor® Violet 540 Anti-Mouse CD3 Antibody[17A2]

Catalog Number: E-AB-F1013T3

Note: Centrifuge before opening to ensure complete recovery of vial contents.

Description

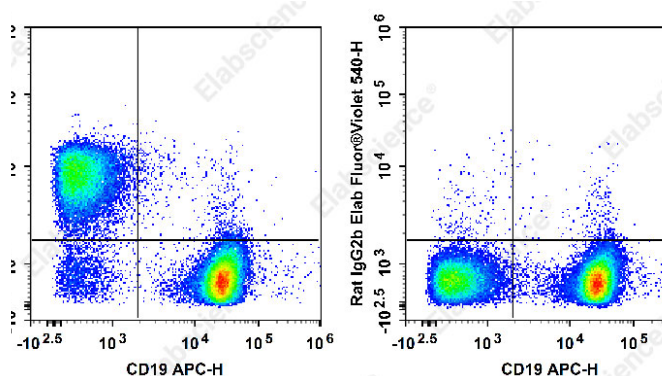
Reactivity	Mouse
Host	Rat
Isotype	Rat IgG2b, κ
Clone No.	17A2
Isotype Control	Elab Fluor® Violet 540 Rat IgG2b, κ Isotype Control[LTF-2] [Product E-AB-F09842T3]
Conjugation	Elab Fluor® Violet 540
Conjugation Information	Elab Fluor® Violet 540 is designed to be excited by the violet laser (405 nm) and detected using an optical filter centered near 548 nm (e.g., a 572/28 nm bandpass filter).
Storage Buffer	Phosphate buffered solution, pH 7.2, containing 0.09% stabilizer and 1% protein protectant.

Applications

Recommended usage

FCM	Each lot of this antibody is quality control tested by flow cytometric analysis. The amount of the reagent is suggested to be used 5 μL of antibody per test (million cells in 100 μL staining volume or per 100 μL of whole blood). Please check your vial before the experiment. Since applications vary, the appropriate dilutions must be determined for individual use.
-----	----------------------------------------------------------------------------------------------------------------------------------------------------------------------------------------------------------------------------------------------------------------------------------------------------------------------------------------------------------------------------------------------------------------------------------

Data



Staining of C57BL/6 murine splenocytes with APC Anti-

Mouse CD19 Antibody[1D3] and Elab Fluor® Violet 540 Anti-Mouse CD3 Antibody[17A2](left) or Elab Fluor® Violet 540 Rat IgG2b, κ Isotype Control(right). Total viable cells were used for analysis.

Preparation & Storage

Storage	Keep as concentrated solution. This product can be stored at 2-8°C for 12 months. Please protected from prolonged exposure to light and do not freeze.
Shipping	Ice bag

Antigen Information

Alternate Names	CD3;CD3E/D/G/Z;CD3e/d/g/z;T-cell surface glycoprotein CD 3epsilon/delta/gamma/zeta chain
-----------------	------------------------------------------------------------------------------------------

For Research Use Only

Toll-free: 1-888-852-8623
Web: www.elabscience.com

Tel: 1-832-243-6086
Email: techsupport@elabscience.com

Fax: 1-832-243-6017

Rev. V1.7

Uniprot ID	P04235;P11942;P22646;P24161;
Gene ID	12502
Background	CD3, also known as T3, is a member of the Ig superfamily and primarily expressed on T cells, NK-T cells, and at different levels on thymocytes during T cell differentiation. CD3 is composed of CD3 ϵ , δ , γ and ζ chains. It forms a TCR complex by associating with TCR α/β or γ/δ chains. CD3 plays a critical role in TCR signal transduction, T cell activation, and antigen recognition by binding the peptide/MHC antigen complex.