

PPIB Monoclonal Antibody

catalog number: E-AB-22123

Note: Centrifuge before opening to ensure complete recovery of vial contents.

Description

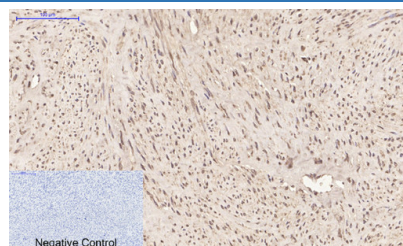
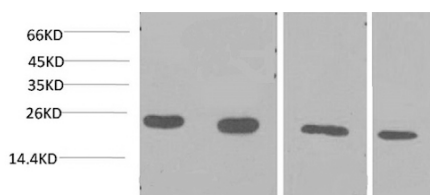
Reactivity	Human;Mouse;Rat
Immunogen	Synthetic Peptide
Host	Mouse
Isotype	IgG
Clone	4D7
Purification	Protein A purification
Buffer	Phosphate buffered solution, pH 7.4, containing 0.05% stabilizer, 0.5% protein protectant and 50% glycerol.

Applications

Recommended Dilution

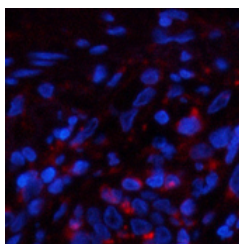
WB	1:1000-2000
IHC	1:50-300
IF	1:50-300

Data



Western Blot analysis of 1) Jurkat, 2)293T, 3)Rat liver, 4)3T3 Immunohistochemistry of paraffin-embedded Human uterus tissue using PPIB Monoclonal Antibody at dilution of 1:2000. tissue using PPIB Monoclonal Antibody at dilution of 1:200.

Observed-MW:21 kDa



Immunofluorescence analysis of Human lung tissue using PPIB Monoclonal Antibody at dilution of 1:200.

Preparation & Storage

Storage	Store at -20°C Valid for 12 months. Avoid freeze / thaw cycles.
Shipping	The product is shipped with ice pack,upon receipt,store it immediately at the temperature recommended.

Background

For Research Use Only

The protein encoded by this gene is a cyclosporine-binding protein and is mainly located within the endoplasmic reticulum. It is associated with the secretory pathway and released in biological fluids. This protein can bind to cells derived from T- and B-lymphocytes, and may regulate cyclosporine A-mediated immunosuppression. Variants have been identified in this protein that give rise to recessive forms of osteogenesis imperfecta.

For Research Use Only

Toll-free: 1-888-852-8623
Web: www.elabscience.com

Tel: 1-832-243-6086
Email: techsupport@elabscience.com

Fax: 1-832-243-6017

Rev. V1.8