

# Recombinant Mouse IL7 Protein(Sumo Tag)

Catalog Number: PDEM100143



**Note:** Centrifuge before opening to ensure complete recovery of vial contents.

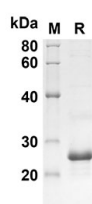
## Description

<b>Species</b>	Mouse
<b>Source</b>	E.coli-derived Mouse IL7 protein Glu26-Ile154, with an N-terminal Sumo
<b>Mol_Mass</b>	27 kDa
<b>Accession</b>	P10168
<b>Bio-activity</b>	Not validated for activity

## Properties

<b>Purity</b>	> 90% as determined by reducing SDS-PAGE.
<b>Endotoxin</b>	< 10 EU/mg of the protein as determined by the LAL method
<b>Storage</b>	Generally, lyophilized proteins are stable for up to 12 months when stored at -20 to -80 °C. Reconstituted protein solution can be stored at 4-8°C for 2-7 days. Aliquots of reconstituted samples are stable at < -20°C for 3 months.
<b>Shipping</b>	This product is provided as lyophilized powder which is shipped with ice packs.
<b>Formulation</b>	Lyophilized from a 0.2 µm filtered solution in PBS with 5% Trehalose and 5% Mannitol.
<b>Reconstitution</b>	It is recommended that sterile water be added to the vial to prepare a stock solution of 0.5 mg/mL. Concentration is measured by UV-Vis.

## Data



SDS-PAGE analysis of Mouse IL7 proteins, 2 µg/lane of Recombinant Mouse IL7 proteins was resolved with SDS-PAGE under reducing conditions, showing bands at 27 KD

## Background

IL7, also known as interleukin 7, is a hematopoietic growth factor that belongs to the IL-7/IL-9 family. It is secreted by stromal cells in the bone marrow and thymus. IL7 stimulates the proliferation of lymphoid progenitors. It is important for proliferation during certain stages of B-cell maturation. IL7 and the hepatocyte growth factor (HGF) form a heterodimer that functions as a pre-pro-B cell growth-stimulating factor. It is found to be a cofactor for V(D)J rearrangement of the T cell receptor beta (TCRβ) during early T cell development. IL7 can be produced locally by intestinal epithelial and epithelial goblet cells and may serve as a regulatory factor for intestinal mucosal lymphocytes.

## For Research Use Only