

## ADGRF5 Polyclonal Antibody

catalog number: E-AB-18017

**Note:** Centrifuge before opening to ensure complete recovery of vial contents.

### Description

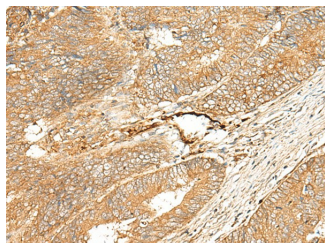
<b>Reactivity</b>	Human
<b>Immunogen</b>	Synthetic peptide of human ADGRF5
<b>Host</b>	Rabbit
<b>Isotype</b>	IgG
<b>Purification</b>	Antigen affinity purification
<b>Conjugation</b>	Unconjugated
<b>Buffer</b>	Phosphate buffered solution, pH 7.4, containing 0.05% stabilizer and 50% glycerol.

### Applications

### Recommended Dilution

<b>IHC</b>	1:40-1:200
------------	------------

### Data



Immunohistochemistry of paraffin-embedded Human colorectal cancer tissue using ADGRF5 Polyclonal Antibody at dilution of 1:40(×200)

### Preparation & Storage

<b>Storage</b>	Store at -20°C Valid for 12 months. Avoid freeze / thaw cycles.
<b>Shipping</b>	The product is shipped with ice pack, upon receipt, store it immediately at the temperature recommended.

### Background

ADGRF5 (Adhesion G Protein-Coupled Receptor F5) is a Protein Coding gene. Among its related pathways are Surfactant metabolism and Metabolism of proteins. Gene Ontology (GO) annotations related to this gene include G-protein coupled receptor activity and transmembrane signaling receptor activity. An important paralog of this gene is ADGRF1.