

Recombinant Clathrin Heavy Chain Monoclonal Antibody

catalog number: **AN301046L**

Note: Centrifuge before opening to ensure complete recovery of vial contents.

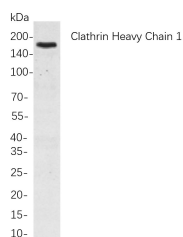
Description

Reactivity	Human;Mouse;Rat
Immunogen	Recombinant Human Clathrin Heavy Chain protein
Host	Rabbit
Isotype	IgG, κ
Clone	B801
Purification	Protein A
Buffer	PBS, 50% glycerol, 0.05% Proclin 300, 0.05% protein protectant.

Applications Recommended Dilution

IHC	1:50-200
WB	1:500-1:2000
IF	1:200-1000
ELISA	1:5000-20000

Data



Western Blot with Recombinant Clathrin Heavy Chain
Monoclonal Antibody at dilution of 1:1000 dilution. Lane A:
Hela cells.

Observed-MW:180 kDa

Calculated-MW:192 kDa

Preparation & Storage

Storage	Store at -20°C Valid for 12 months. Avoid freeze / thaw cycles.
Shipping	Ice bag

Background

Clathrin is a major protein component of the cytoplasmic face of intracellular organelles, called coated vesicles and coated pits. These specialized organelles are involved in the intracellular trafficking of receptors and endocytosis of a variety of macromolecules. The basic subunit of the clathrin coat is composed of three heavy chains and three light chains.

For Research Use Only