

Recombinant Human Complement Component C8 Gamma Chain/C8G Protein (His Tag)

Catalog Number: PKSH032271

Note: Centrifuge before opening to ensure complete recovery of vial contents.

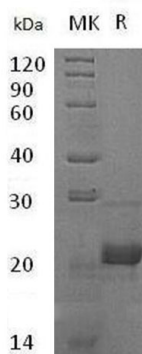
Description

Species	Human
Source	E.coli-derived Human C8G protein Gln21-Arg202, with an N-terminal His
Calculated MW	22.6 kDa
Observed MW	22 kDa
Accession	AA113627.1
Bio-activity	Not validated for activity

Properties

Purity	> 95 % as determined by reducing SDS-PAGE.
Concentration	Subject to label value.
Endotoxin	< 1.0 EU per µg of the protein as determined by the LAL method.
Storage	Store at < -20°C, stable for 6 months. Please minimize freeze-thaw cycles.
Shipping	This product is provided as liquid. It is shipped at frozen temperature with blue ice/gel packs. Upon receipt, store it immediately at < -20°C.
Formulation	Supplied as a 0.2 µm filtered solution of 20mM PB, 150mM NaCl, pH 7.4.

Data



> 95 % as determined by reducing SDS-PAGE.

Background

Complement component C8 is a constituent of the membrane attack complex, C8 alpha, C8 beta and C8G. C8G is a secreted protein and consists a disulfide-linked C8 alpha-gamma heterodimer and a non-covalently associated C8 beta chain. C8 alpha and C8 beta play an important role in complement-mediated bacterial killing together. C8 is involved in the formation of Membrane Attack Complex on bacterial cell membranes. C8 binds to the C5B-7 complex, forming the C5B-8 complex. C5-B8 binds C9 and acts as a catalyst in the polymerization of C9. The gamma subunit seems to be able to bind retinol. Patients lacking C8 are susceptible to certain bacterial infections.

For Research Use Only