

## PE/Cyanine5 Anti-Human CD146 Antibody[P1H12]

**Catalog Number:** AN00323G

**Note:** Centrifuge before opening to ensure complete recovery of vial contents.

### Description

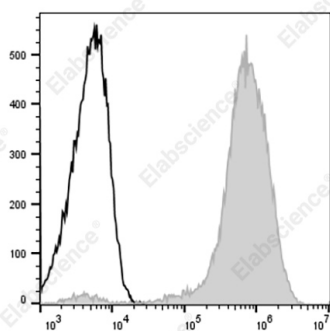
<b>Reactivity</b>	Human
<b>Host</b>	Mouse
<b>Isotype</b>	Mouse IgG2a, κ
<b>Clone No.</b>	P1H12
<b>Isotype Control</b>	PE/Cyanine5 Mouse IgG2a, κ Isotype Control[C1.18.4] [Product E-AB-F09802G]
<b>Conjugation</b>	PE/Cyanine 5
<b>Conjugation Information</b>	PE/Cyanine5 is designed to be excited by the Blue (488 nm), Green (532 nm) and yellow-green (561 nm) lasers and detected using an optical filter centered near 670 nm (e.g., a 690/50 nm bandpass filter).
<b>Storage Buffer</b>	Phosphate buffered solution, pH 7.2, containing 0.09% stabilizer and 1% protein protectant.

### Applications

#### Recommended usage

<b>FCM</b>	Each lot of this antibody is quality control tested by flow cytometric analysis. <b>The amount of the reagent is suggested to be used 5 μL of antibody per test (million cells in 100 μL staining volume or per 100 μL of whole blood).</b> Please check your vial before the experiment. Since applications vary, the appropriate dilutions must be determined for individual use.
------------	---

### Data



Staining of the HeLa cell line with PE/Cyanine5 Anti-Human CD146 Antibody[P1H12] (filled gray histogram) or PE/Cyanine5 Mouse IgG2a,κ Isotype Control (empty black histogram). Total viable cells were used for analysis.

### Preparation & Storage

<b>Storage</b>	Keep as concentrated solution. This product can be stored at 2-8°C for 12 months. Please protected from prolonged exposure to light and do not freeze.
<b>Shipping</b>	Ice bag

### Antigen Information

<b>Alternate Names</b>	Muc-18;MCAM;Mel-CAM;S-endo
<b>Uniprot ID</b>	P43121

### For Research Use Only

**Gene ID**

4162

**Background**

CD146 is a 118 kD integral transmembrane glycoprotein that is also known as MUC18, S-Endo, MCAM, and Mel-CAM (melanoma cell adhesion molecule). It belongs to the immunoglobulin superfamily. CD146 is expressed on melanoma cells, epithelial cells, endothelial cells, fibroblasts, activated T cells, multipotent mesenchymal stromal cells, and activated keratinocytes. CD146 mediates heterophilic cell adhesion and regulates monocyte transendothelial migration. The ligand of CD146 remains to be identified.

**For Research Use Only**