

## CK-17 Polyclonal Antibody

**catalog number: E-AB-70242**

**Note:** Centrifuge before opening to ensure complete recovery of vial contents.

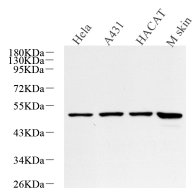
### Description

<b>Reactivity</b>	Human;Mouse;Rat
<b>Immunogen</b>	KLH conjugated Synthetic peptide corresponding to Mouse Cytokeratin 17
<b>Host</b>	Rabbit
<b>Isotype</b>	IgG
<b>Purification</b>	Affinity purification
<b>Buffer</b>	Phosphate buffered solution, pH 7.4, containing 0.05% stabilizer, 1% protein protectant and 50% glycerol.

### Applications

Applications	Recommended Dilution
<b>WB</b>	1:500-1:2000
<b>IHC</b>	1:300-1:800

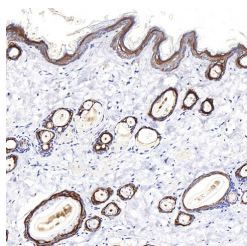
### Data



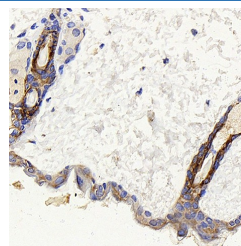
Western Blot analysis of various samples using CK-17 Polyclonal Antibody at dilution of 1:600.

**Observed-MW:48 kDa**

**Calculated-MW:48 kDa**



Immunohistochemistry analysis of paraffin-embedded rat skin using CK-17 Polyclonal Antibody at dilution of 1:400.



Immunohistochemistry analysis of paraffin-embedded mouse skin using CK-17 Polyclonal Antibody at dilution of 1:400.

### Preparation & Storage

<b>Storage</b>	Store at -20°C Valid for 12 months. Avoid freeze / thaw cycles.
<b>Shipping</b>	The product is shipped with ice pack, upon receipt, store it immediately at the temperature recommended.

### Background

This gene encodes the type I intermediate filament chain keratin 17, expressed in nail bed, hair follicle, sebaceous glands, and other epidermal appendages. Mutations in this gene lead to Jackson-Lawler type pachyonychia congenita and steatocystoma multiplex.

### For Research Use Only