

## Elab Fluor® 700 Anti-Rat CD3 Antibody[G4.18]

**Catalog Number:** E-AB-F1228UM1

**Note:** Centrifuge before opening to ensure complete recovery of vial contents.

### Description

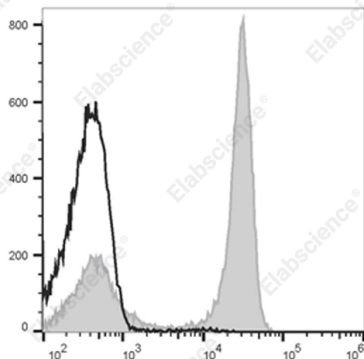
<b>Reactivity</b>	Rat
<b>Host</b>	Mouse
<b>Isotype</b>	Mouse IgG3, κ
<b>Clone No.</b>	G4.18
<b>Isotype Control</b>	Elab Fluor® 700 Mouse IgG3, κ Isotype Control[A112-3] [Product E-AB-F09753M1]
<b>Conjugation</b>	Elab Fluor® 700
<b>Conjugation Information</b>	Elab Fluor® 700 is designed to be excited by the Red laser (627-640 nm) and detected using an optical filter centered near 719 nm (e.g., a 725/40 nm bandpass filter).
<b>Storage Buffer</b>	Phosphate buffered solution, pH 7.2, containing 0.09% stabilizer and 1% protein protectant.

### Applications

### Recommended usage

<b>FCM</b>	Each lot of this antibody is quality control tested by flow cytometric analysis. Please check your vial before the experiment. Since applications vary, the appropriate dilutions must be determined for individual use. We suggest each investigator should titrate the reagent to obtain optimal results [The recommended concentration is 0.1-1 µg/10 <sup>6</sup> cells in 100 µL volume].
------------	--

### Data



Staining of Rat splenocytes with Elab Fluor® 700 Anti-Rat CD3 Antibody[G4.18] (filled gray histogram) or Elab Fluor® 700 Mouse IgG3, κ Isotype Control (empty black histogram).

Total viable cells were used for analysis.

### Preparation & Storage

<b>Storage</b>	Keep as concentrated solution. This product can be stored at 2-8°C for 12 months. Please protected from prolonged exposure to light and do not freeze.
<b>Shipping</b>	Ice bag

### Antigen Information

<b>Alternate Names</b>	T-cell surface glycoprotein CD3 δ;γ;ε;and ζ chains;CD3 Complex;T3;CD3
<b>Uniprot ID</b>	P19377;Q64159;D4A5M2;
<b>Gene ID</b>	25710;300678;315609;25300

### For Research Use Only

## Background

CD3 is a complex composed of  $\delta$ ,  $\gamma$ ,  $\epsilon$ , and  $\zeta$  chains. They are 20-25 kD members of the immunoglobulin superfamily and associated with the T cell receptor (TCR). CD3 is expressed on thymocytes, peripheral T cells, some NK-T cells, and dendritic epidermal T cells. CD3 is involved in antigen recognition, signal transduction, and T cell activation