

Recombinant Human IDH1 Protein (His Tag)

Catalog Number: PKSH032659

Note: Centrifuge before opening to ensure complete recovery of vial contents.

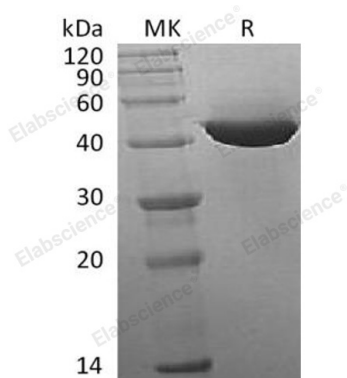
Description

Species	Human
Source	E.coli-derived Human IDH1 protein Met 1-Leu414, with an C-terminal His
Calculated MW	48.1 kDa
Observed MW	39-54 kDa
Accession	O75874
Bio-activity	Not validated for activity

Properties

Purity	> 95 % as determined by reducing SDS-PAGE.
Concentration	Subject to label value.
Endotoxin	< 1.0 EU per µg of the protein as determined by the LAL method.
Storage	Store at < -20°C, stable for 6 months. Please minimize freeze-thaw cycles.
Shipping	This product is provided as liquid. It is shipped at frozen temperature with blue ice/gel packs. Upon receipt, store it immediately at < - 20°C.
Formulation	Supplied as a 0.2 µm filtered solution of 50mM Tris, 200mM NaCl, 10% glycerol, pH8.0.

Data



> 95 % as determined by reducing SDS-PAGE.

Background

Isocitrate Dehydrogenase [NADP] Cytoplasmic (IDH1) belongs to the isocitrate and isopropylmalate dehydrogenases family. IDH1 exists as a homodimer; binding one magnesium or manganese ion per subunit. Mutations of IDH1 have been shown to cause metaphyseal chondromatosis with aciduria and are involved in the development of glioma. IDH1 plays a role in the regeneration of NADPH for intraperoxisomal reductions; such as the conversion of 2; 4-dienoyl-CoAs to 3-enoyl-CoAs; as well as in peroxisomal reactions that consume 2-oxoglutarate; namely the α -hydroxylation of phytanic acid.

For Research Use Only

Toll-free: 1-888-852-8623
Web: www.elabscience.com

Tel: 1-832-243-6086
Email: techsupport@elabscience.com

Fax: 1-832-243-6017