

## ITGAX Polyclonal Antibody

**catalog number: E-AB-70017**

**Note:** Centrifuge before opening to ensure complete recovery of vial contents.

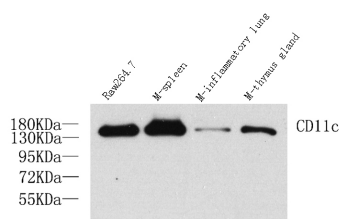
### Description

<b>Reactivity</b>	Human;Mouse;Rat
<b>Immunogen</b>	KLH conjugated Synthetic peptide corresponding to Mouse CD11c
<b>Host</b>	Rabbit
<b>Isotype</b>	IgG
<b>Purification</b>	Affinity purification
<b>Buffer</b>	Phosphate buffered solution, pH 7.4, containing 0.05% stabilizer, 1% protein protectant and 50% glycerol.

### Applications

Applications	Recommended Dilution
<b>WB</b>	1:500-1:1000
<b>IHC</b>	1:100-1:300
<b>IF</b>	1:100-1:300

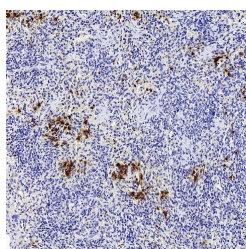
### Data



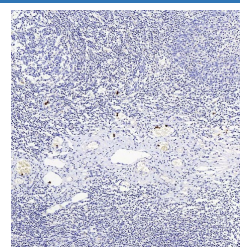
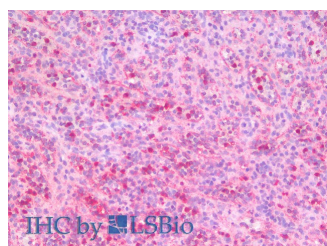
Western Blot analysis of various samples using ITGAX Polyclonal Antibody at dilution of 1:1000.

**Observed-MW:150 kDa**

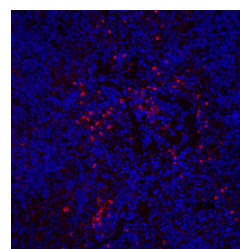
**Calculated-MW:120-150 kDa**



Immunohistochemistry analysis of paraffin-embedded Rat inflammatory spleen using ITGAX Polyclonal Antibody at dilution of 1:200.



Immunohistochemistry analysis of paraffin-embedded Human amygdalitis using ITGAX Polyclonal Antibody at dilution of 1:200.



Immunofluorescence analysis of Mouse inflammatory spleen using ITGAX Polyclonal Antibody at dilution of 1:200.

### For Research Use Only

Toll-free: 1-888-852-8623  
Web: [www.elabscience.com](http://www.elabscience.com)

Tel: 1-832-243-6086  
Email: [techsupport@elabscience.com](mailto:techsupport@elabscience.com)

Fax: 1-832-243-6017

Rev. V1.7

Immunohistochemistry analysis of paraffin-embedded  
Human Spleen using ITGAX Polyclonal  
Antibody(Elabscience Product Detected by Lifespan).

## Preparation & Storage

**Storage**

Store at -20°C Valid for 12 months. Avoid freeze / thaw cycles.

**Shipping**

The product is shipped with ice pack,upon receipt,store it immediately at the temperature recommended.

## Background

Integrins are cell adhesion receptors that are heterodimers composed of non-covalently associated  $\alpha$  and  $\beta$  subunits. CD11c/Integrin alpha X is a type I transmembrane protein present on a variety of cells,including monocytes/macrophages,granulocytes,NK cells and dendritic cells. Integrin alpha X/beta 2 acts a receptor for fibrinogen and is important in monocyte adhesion and chemotaxis.

## For Research Use Only