

## OBFC1 Polyclonal Antibody

catalog number: **E-AB-91446**

**Note:** Centrifuge before opening to ensure complete recovery of vial contents.

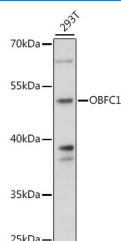
### Description

|                     |  |
|---------------------|--|
| <b>Reactivity</b>   | Human  |
| <b>Immunogen</b>    | Recombinant fusion protein of human OBFC1  |
| <b>Host</b>         | Rabbit   |
| <b>Isotype</b>      | IgG  |
| <b>Purification</b> | Affinity purification  |
| <b>Buffer</b>       | Phosphate buffered solution, pH 7.4, containing 0.05% stabilizer and 50% glycerol. |

### Applications Recommended Dilution

|           |              |
|-----------|--------------|
| <b>WB</b> | 1:500-1:2000 |
|-----------|--------------|

### Data



Western blot analysis of extracts of 293T cells using OBFC1 Polyclonal Antibody at 1:1000 dilution.

**Observed-MV:45 kDa**

**Calculated-MV:42 kDa**

### Preparation & Storage

|                 |  |
|-----------------|--|
| <b>Storage</b>  | Store at -20°C Valid for 12 months. Avoid freeze / thaw cycles.  |
| <b>Shipping</b> | The product is shipped with ice pack, upon receipt, store it immediately at the temperature recommended. |

### Background

OBFC1 and C17ORF68 (MIM 613129) are subunits of an alpha accessory factor (AAF) that stimulates the activity of DNA polymerase-alpha-primase (see MIM 176636), the enzyme that initiates DNA replication. OBFC1 also appears to function in a telomere-associated complex with C17ORF68 and TEN1 (C17ORF106; MIM 613130).

### For Research Use Only