

## CRMP1 Polyclonal Antibody

**catalog number: E-AB-92489**

**Note:** Centrifuge before opening to ensure complete recovery of vial contents.

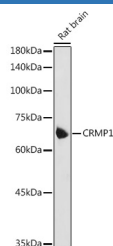
### Description

<b>Reactivity</b>	Human;Mouse;Rat
<b>Immunogen</b>	Recombinant fusion protein of human CRMP1
<b>Host</b>	Rabbit
<b>Isotype</b>	IgG
<b>Purification</b>	Affinity purification
<b>Buffer</b>	Phosphate buffered solution, pH 7.4, containing 0.05% stabilizer and 50% glycerol.

### Applications

Applications	Recommended Dilution
<b>WB</b>	1:500-1:2000
<b>IF</b>	1:50-1:200

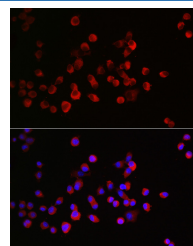
### Data



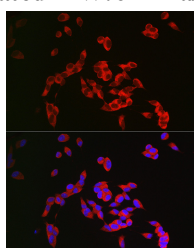
Western blot analysis of extracts of Rat brain using CRMP1 Polyclonal Antibody at 1:1000 dilution.

**Observed-MW:62 kDa**

**Calculated-MW:62 kDa/74 kDa**



Immunofluorescence analysis of Neuro-2a cells using CRMP1 Polyclonal Antibody at dilution of 1:300 (40x lens).  
Blue: DAPI for nuclear staining.



Immunofluorescence analysis of SH-SY5Y cells using CRMP1 Polyclonal Antibody at dilution of 1:300 (40x lens).  
Blue: DAPI for nuclear staining.

### Preparation & Storage

<b>Storage</b>	Store at -20°C Valid for 12 months. Avoid freeze / thaw cycles.
<b>Shipping</b>	The product is shipped with ice pack, upon receipt, store it immediately at the temperature recommended.

### Background

This gene encodes a member of a family of cytosolic phosphoproteins expressed exclusively in the nervous system. The encoded protein is thought to be a part of the semaphorin signal transduction pathway implicated in semaphorin-induced growth cone collapse during neural development. Alternative splicing results in multiple transcript variants.

### For Research Use Only