

GNRH1 Polyclonal Antibody

catalog number: E-AB-68373

Note: Centrifuge before opening to ensure complete recovery of vial contents.

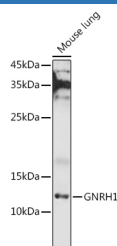
Description

Reactivity	Human;Mouse;Rat
Immunogen	Recombinant fusion protein of human GNRH1
Host	Rabbit
Isotype	IgG
Purification	Affinity purification
Buffer	Phosphate buffered solution, pH 7.4, containing 0.05% stabilizer and 50% glycerol.

Applications Recommended Dilution

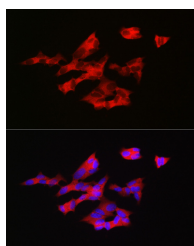
WB	1:500-1:2000
IF	1:50-1:200

Data



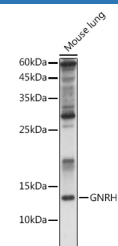
Western blot analysis of extracts of Mouse lung using GNRH1 Polyclonal Antibody at 1:1000 dilution.

Observed-MW:12 kDa
Calculated-MW:10 kDa



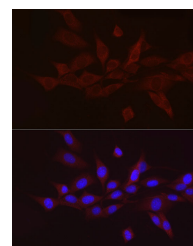
Immunofluorescence analysis of SH-SY5Y cells using GNRH1 Polyclonal antibody at dilution of 1:200 (40x lens).

Blue: DAPI for nuclear staining.



Western blot analysis of extracts of Rat kidney using GNRH1 Polyclonal Antibody at 1:1000 dilution.

Observed-MW:12 kDa
Calculated-MW:10 kDa



Immunofluorescence analysis of NIH/3T3 cells using GNRH1 Polyclonal antibody at dilution of 1:50 (40x lens).

Blue: DAPI for nuclear staining.

Preparation & Storage

Storage	Store at -20°C Valid for 12 months. Avoid freeze / thaw cycles.
Shipping	The product is shipped with ice pack, upon receipt, store it immediately at the temperature recommended.

Background

For Research Use Only

This gene encodes a preproprotein that is proteolytically processed to generate a peptide that is a member of the gonadotropin-releasing hormone (GnRH) family of peptides. Alternative splicing results in multiple transcript variants, at least one of which is secreted and then cleaved to generate gonadoliberin-1 and GnRH-associated peptide 1. Gonadoliberin-1 stimulates the release of luteinizing and follicle stimulating hormones, which are important for reproduction. Mutations in this gene are associated with hypogonadotropic hypogonadism.

For Research Use Only

Toll-free: 1-888-852-8623
Web: www.elabscience.com

Tel: 1-832-243-6086
Email: techsupport@elabscience.com

Fax: 1-832-243-6017

Rev. V1.7