

CD10 Monoclonal Antibody

catalog number: E-AB-22153

Note: Centrifuge before opening to ensure complete recovery of vial contents.

Description

Reactivity	Human;Mouse;Rat
Immunogen	Synthetic Peptide
Host	Mouse
Isotype	IgG
Clone	5B8
Purification	Protein A purification
Conjugation	Unconjugated
Buffer	Phosphate buffered solution, pH 7.4, containing 0.05% stabilizer, 0.5% protein protectant and 50% glycerol.

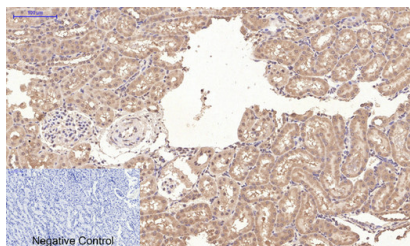
Applications

Recommended Dilution

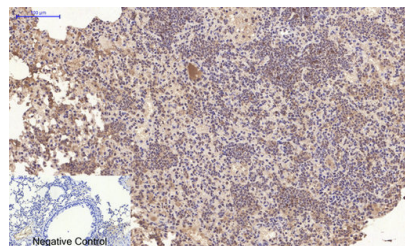
IHC

1:100-300

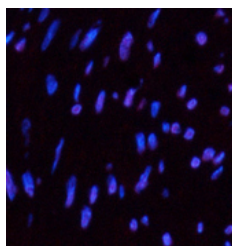
Data



Immunohistochemistry of paraffin-embedded Rat kidney tissue using CD10 Monoclonal Antibody at dilution of 1:200.



Immunohistochemistry of paraffin-embedded Mouse lung tissue using CD10 Monoclonal Antibody at dilution of 1:200.



Immunofluorescence analysis of Human uterus tissue using CD10 Monoclonal Antibody at dilution of 1:200.

Preparation & Storage

Storage	Store at -20°C Valid for 12 months. Avoid freeze / thaw cycles.
Shipping	The product is shipped with ice pack, upon receipt, store it immediately at the temperature recommended.

Background

Thermolysin-like specificity, but is almost confined on acting on polypeptides of up to 30 amino acids. Biologically important in the destruction of opioid peptides such as Met- and Leu-enkephalins by cleavage of a Gly-Phe bond. Able to cleave angiotensin-1, angiotensin-2 and angiotensin 1-9. Involved in the degradation of atrial natriuretic factor (ANF). Displays UV-inducible elastase activity toward skin preelastic and elastic fibers.

For Research Use Only