

Recombinant TXD12 Monoclonal Antibody

catalog number: **AN301120L**

Note: Centrifuge before opening to ensure complete recovery of vial contents.

Description

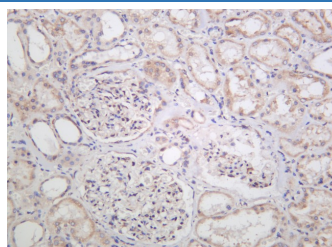
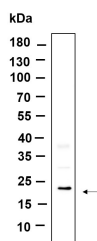
Reactivity	Human;Mouse;Rat
Immunogen	Recombinant Human TXD12 protein
Host	Rabbit
Isotype	IgG, κ
Clone	B875
Purification	Protein A
Buffer	PBS, 50% glycerol, 0.05% Proclin 300, 0.05% protein protectant.

Applications

Recommended Dilution

IHC	1:500-1:2000
WB	1:2000-1:10000
IF	1:200-1:1000
ELISA	1:5000-1:20000

Data



Western Blot with Recombinant TXD12 Monoclonal Antibody Immunohistochemistry of paraffin-embedded human kidney at dilution of 1:1000 dilution. Lane A: HepG2 lysate. using Recombinant TXD12 Monoclonal Antibody at dilution of 1:200.

Observed-MW:19 kDa

Calculated-MW:19 kDa

Preparation & Storage

Storage	Store at -20°C Valid for 12 months. Avoid freeze / thaw cycles.
Shipping	Ice bag

Background

This gene encodes a member of the thioredoxin superfamily. Members of this family are characterized by a conserved active motif called the thioredoxin fold that catalyzes disulfide bond formation and isomerization. This protein localizes to the endoplasmic reticulum and has a single atypical active motif. The encoded protein is mainly involved in catalyzing native disulfide bond formation and displays activity similar to protein-disulfide isomerases. This protein may play a role in defense against endoplasmic reticulum stress. Alternate splicing results in both coding and non-coding variants.

For Research Use Only