

Cystatin E/CST6 Monoclonal Antibody

catalog number: **AN200026P**

Note: Centrifuge before opening to ensure complete recovery of vial contents.

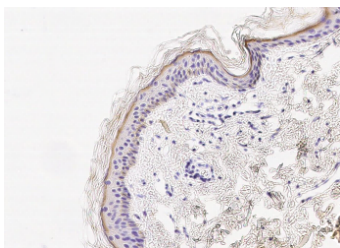
Description

Reactivity	Human
Immunogen	Recombinant Human Cystatin E / CST6 protein
Host	Mouse
Isotype	IgG1
Clone	6G11
Purification	Protein A
Buffer	0.2 µm filtered solution in PBS

Applications Recommended Dilution

IHC-P	1:50-1:200
--------------	------------

Data



Immunohistochemistry of paraffin-embedded human skin using Cystatin E / CST6 Monoclonal Antibody at dilution of 1:60.

Preparation & Storage

Storage	This antibody can be stored at 2°C-8°C for one month without detectable loss of activity. Antibody products are stable for twelve months from date of receipt when stored at -20°C to -80°C. Preservative-Free. Avoid repeated freeze-thaw cycles.
Shipping	Ice bag

Background

Cystatin E/M, also referred to as CST6, is a member of type 2 cysteine proteinase inhibitors of the cystatin superfamily, and inhibits papain and cathepsin B. Cystatin E is a low molecular mass secreted protein existing in both a glycosylated (17 kDa) and an unglycosylated (14 kDa) form, with two characteristic intrachain disulfide bridges. Expression of cystatin M/E is found to be restricted to the epidermis, more specifically in the stratum granulosum, sweat glands, sebaceous glands, and the hair follicles. In addition to its function as a cysteine protease inhibitor, cystatin M/E also serves as a target for cross-linking by transglutaminases. Accordingly, cystatin M/E was suggested to be involved in barrier formation and maintenance. Furthermore, studies have revealed that cystatin M/E is frequently epigenetically inactivated during breast carcinogenesis, and thus be regarded as a candidate of tumour suppressor gene.

For Research Use Only