

# Purified Anti-Mouse CD150 Antibody[TC15-12F12.2]

catalog number: E-AB-F1177A

**Note:** Centrifuge before opening to ensure complete recovery of vial contents.

## Description

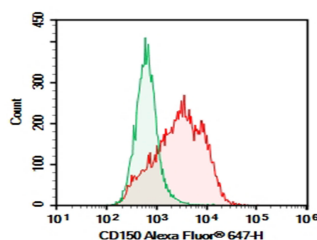
<b>Reactivity</b>	Mouse
<b>Immunogen</b>	Recombinant Mouse CD150 protein
<b>Host</b>	Rat
<b>Isotype</b>	Rat IgG2a, $\lambda$
<b>Clone</b>	TC15-12F12.2
<b>Purification</b>	>98%, Protein A/G purified
<b>Conjugation</b>	Unconjugated
<b>buffer</b>	PBS, pH 7.2. Contains 0.05% proclin 300.

## Applications

## Recommended Dilution

<b>FCM</b>	2 $\mu\text{g}/\text{mL}$ ( $1 \times 10^5$ - $5 \times 10^5$ cells)
------------	--

## Data



C57/BL6 Mouse splenocytes were stained with 0.2  $\mu\text{g}$  Purified Anti-Mouse CD150 Antibody[TC15-12F12.2] (Right) and 0.2  $\mu\text{g}$  Rat Ig2a,  $\kappa$  Isotype Control (Left), followed by Alexa Fluor® 647-conjugated Goat Anti-Rat IgG Secondary Antibody.

## Preparation & Storage

<b>Storage</b>	Store at 4°C valid for 12 months or -20°C valid for long term storage, avoid freeze / thaw cycles.
<b>Shipping</b>	Order now, ship in 3 days

## Background

CD150 is a 75-95 kD member of the immunoglobulin superfamily, also known as SLAM (signaling lymphocyte activation molecule) or IPO-3. CD150, a single chain type I transmembrane molecule, is expressed on thymocytes, T cell subsets, B cells, dendritic cells, and endothelial cells. The expression is upregulated upon activation. CD150 expression has been shown to be maintained on Th1 but not Th2 clones. T regulatory cells express a relatively high level of CD150. Antibodies against CD150 have been shown to augment IFN- $\gamma$  production by Th1 cells, especially when co-stimulated through the TCR. CD150 associates with the src homology 2-domain-containing protein tyrosine phosphatase SHP-2, and this association is thought to be involved in signal transduction. In combination with CD48, CD150 is a useful marker for hematopoietic stem cell studies.

## For Research Use Only