

## Recombinant Human CXCL1 Protein(Trx Tag)

**Catalog Number: GPEH0660**

**Note:** Centrifuge before opening to ensure complete recovery of vial contents.

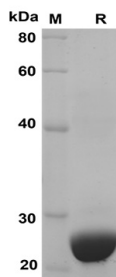
### Description

<b>Species</b>	Human
<b>Source</b>	E.coli-derived Human CXCL1 protein Ala35-Asn107, with an N-terminal Trx
<b>Calculated MW</b>	28.0 kDa
<b>Observed MW</b>	25 kDa
<b>Accession</b>	P09341
<b>Bio-activity</b>	Not validated for activity

### Properties

<b>Purity</b>	> 95% as determined by reducing SDS-PAGE.
<b>Endotoxin</b>	< 10 EU/mg of the protein as determined by the LAL method
<b>Storage</b>	Generally, lyophilized proteins are stable for up to 12 months when stored at -20 to -80 °C. Reconstituted protein solution can be stored at 4-8°C for 2-7 days. Aliquots of reconstituted samples are stable at < -20°C for 3 months.
<b>Shipping</b>	This product is provided as lyophilized powder which is shipped with ice packs.
<b>Formulation</b>	Lyophilized from a 0.2 µm filtered solution in PBS with 5% Trehalose and 5% Mannitol.
<b>Reconstitution</b>	It is recommended that sterile water be added to the vial to prepare a stock solution of 0.5 mg/mL. Concentration is measured by UV-Vis.

### Data



SDS-PAGE analysis of Human CXCL1 proteins, 2µg/lane of

Recombinant Human CXCL1 proteins was resolved with SDS-PAGE under reducing conditions, showing bands at 25 KD

### Background

Chemokine (C-X-C motif) Ligand 1 Protein (CXCL1) is a growth factor for melanoma cells and a chemotaxin for neutrophils and a member of the CXC chemokine family that is a potent neutrophil attractant and activator and is also active toward basophils. CXCL1 is expressed by macrophages, neutrophils and epithelial cells; it has neutrophil chemoattractant activity. CXCL1 plays a critical nonredundant role in the development of experimental Lyme arthritis and carditis via CXCR2-mediated recruitment of neutrophils into the site of infection and may also have important pro-nociceptive effects via its direct actions on sensory neurons, and may induce long-term changes that involve protein synthesis.

### For Research Use Only