

Recombinant Mouse ARG1 Protein(Gst Tag)

Catalog Number: PDEM100157

Note: Centrifuge before opening to ensure complete recovery of vial contents.

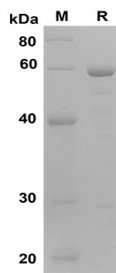
Description

Species	Mouse
Source	E.coli-derived Human ARG1 protein Met1-Lys322, with an N-terminal Gst
Calculated MW	61.4 kDa
Observed MW	60 kDa
Accession	Q61176
Bio-activity	Not validated for activity

Properties

Purity	> 90% as determined by reducing SDS-PAGE.
Endotoxin	< 10 EU/mg of the protein as determined by the LAL method
Storage	Generally, lyophilized proteins are stable for up to 12 months when stored at -20 to -80 °C. Reconstituted protein solution can be stored at 4-8°C for 2-7 days. Aliquots of reconstituted samples are stable at < -20°C for 3 months.
Shipping	This product is provided as lyophilized powder which is shipped with ice packs.
Formulation	Lyophilized from a 0.2 µm filtered solution in PBS with 5% Trehalose and 5% Mannitol.
Reconstitution	It is recommended that sterile water be added to the vial to prepare a stock solution of 0.5 mg/mL. Concentration is measured by UV-Vis.

Data



SDS-PAGE analysis of Human ARG1 proteins, 2µg/lane of Recombinant Human ARG1 proteins was resolved with SDS-PAGE under reducing conditions, showing bands at 60 KD

Background

Arginase is the focal enzyme of the urea cycle hydrolysing L-arginine to urea and L-ornithine. Emerging studies have identified arginase in the vasculature and have implicated this enzyme in the regulation of nitric oxide (NO) synthesis and the development of vascular disease. Arginase also redirects the metabolism of L-arginine to L-ornithine and the formation of polyamines and L-proline, which are essential for smooth muscle cell growth and collagen synthesis. Arginase is encoded by two recently discovered genes (Arginase I and Arginase II). In most mammals, Arginase 1 (ARG1) also known as Arginase, liver, which functions in the urea cycle, and is located primarily in the cytoplasm of the liver. The second isozyme, Arginase II, has been implicated in the regulation of the arginine/ornithine concentrations in the cell. It is located in mitochondria of several tissues in the body, with most abundance in the kidney and prostate. It may be found at lower levels in macrophages, lactating mammary glands, and brain.