

PRL/Prolactin Polyclonal Antibody

catalog number: AN000180P

Note: Centrifuge before opening to ensure complete recovery of vial contents.

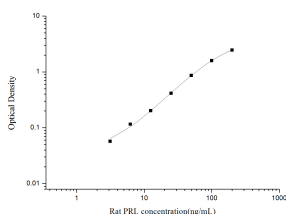
Description

| | |
|---------------------|---|
| Reactivity | Rat |
| Immunogen | Recombinant Rat PRL/Prolactin protein expressed by E.coli |
| Host | Rabbit |
| Isotype | Rabbit IgG |
| Purification | Antigen Affinity Purification |
| Buffer | Phosphate buffered solution, pH 7.2, containing 0.05% Proclin300. |

Applications Recommended Dilution

| | |
|-----------------------|---------------|
| ELISA Capture | 2-8 µg/mL |
| ELISA Detector | 0.1-0.4 µg/mL |

Data



Sandwich ELISA-Recombinant Rat PRL/Prolactin protein standard curve. Background subtracted standard curve using PRL/Prolactin antibody(AN000180P) (Capture), PRL/Prolactin antibody(AN000180P)(Detector) in sandwich ELISA. The reference range value for Recombinant Rat PRL/Prolactin protein is 3.13-200 ng/mL.

Preparation & Storage

| | |
|-----------------|--|
| Storage | Store at 4°C valid for 12 months or -20°C valid for long term storage, avoid freeze / thaw cycles. |
| Shipping | The product is shipped with ice pack, upon receipt, store it immediately at the temperature recommended. |

Background

Prolactin (PRL) is a neuroendocrine pituitary hormone. Prolactin is synthesized by the anterior pituitary, placenta, brain, uterus, dermal fibroblasts, decidua, B cell, T cells, NK cells, and breast cancer cells. Originally characterized as a lactogenic hormone, studies have demonstrated broader roles in breast cancer development, regulation of reproductive function, and immunoregulation.

For Research Use Only