

Recombinant Mouse CXCL16 Protein (His Tag)

Catalog Number: PKSM040995

Note: Centrifuge before opening to ensure complete recovery of vial contents.

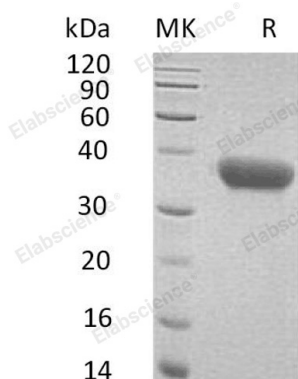
Description

Species	Mouse
Source	HEK293 Cells-derived Mouse CXCL16 protein Asn27-Trp201 , with an C-terminal His
Calculated MW	20.1 kDa
Observed MW	28-39 kDa
Accession	Q8BSU2
Bio-activity	Not validated for activity

Properties

Purity	> 95 % as determined by reducing SDS-PAGE.
Endotoxin	< 1.0 EU per µg of the protein as determined by the LAL method.
Storage	Generally, lyophilized proteins are stable for up to 12 months when stored at -20 to -80 °C. Reconstituted protein solution can be stored at 4-8°C for 2-7 days. Aliquots of reconstituted samples are stable at < -20°C for 3 months.
Shipping	This product is provided as lyophilized powder which is shipped with ice packs.
Formulation	Lyophilized from a 0.2 µm filtered solution of PBS, pH 7.4. Normally 5% - 8% trehalose, mannitol and 0.01% Tween 80 are added as protectants before lyophilization. Please refer to the specific buffer information in the printed manual.
Reconstitution	Please refer to the printed manual for detailed information.

Data



> 95 % as determined by reducing SDS-PAGE.

Background

CXCL16 is a single-pass type I membrane protein, which consists of 246 amino acids, CXCL16 induces a strong chemotatic response and calcium mobilization. CXCL16 acts as a scavenger receptor on macrophages, which specially binds to oxidized low density lipoprotein. CXCL16 may involves in pathophysiology such as atherogenesis. Soluble CXCL16 may play an important role in liver metastases through the induction of epithelial-mesenchymal transition.

For Research Use Only